

**EMPOWER YOUR LABORATORY**

# **LM 1015 - 200**

Fully Automatic Clinical Biochemistry Analyzer

---



## LM 1015-200

Automatic Random Access Bio Chemistry Analyzer

### DESIGNED FOR UNINTERRUPTED WORK FLOW

#### Probe with Collision-Protection System

Both horizontal and vertical collision protection ensures that system re-starts testing after any unwanted physical intervention. This prevents wastage of reagents, saves test time and increases life of probe.

#### Multi Functional Probe

Probe has flexibility to work even as a mixer in case in-built mixer does not work.

#### Probe With Capacitance Based Liquid Level Sensor

Probe with liquid level sensor checks and indicates the presence of adequate sample or reagent in the container before starting testing process. Thus prevents unwanted interruptions in testing process.



### ROBUST MULTI-FUNCTIONAL SOFTWARE

#### Reflex Testing Functionality

Allows user to program Low & High panic value for a particular test which triggers auto-testing of assigned tests which ensures faster and comprehensive reporting.

#### Dynamic & Real-Time Display Of Test Running Status For Quicker Decision Making

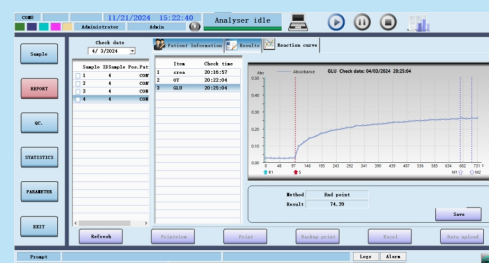
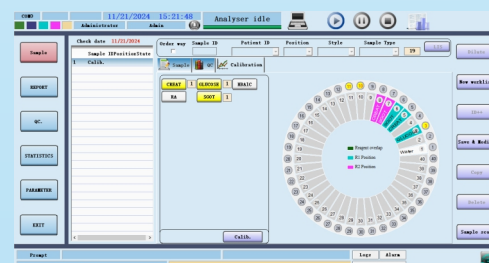
- Running status of reagent tray, sample tray & reaction tray
- Real-time monitoring of Reaction curve

#### On Board Inventory Management

Real-time monitoring of reagent residual volume saves reagent cost & time

#### In-Built Full QC Program




- Provision to run 3 levels of control with Levey Jennings graph which gives confidence in reporting with multiple rules (1SD, 2SD and 3SD)
- Reagent, Calibrator & Control lot monitoring
- User Friendly Bi-Directional LIS Interface

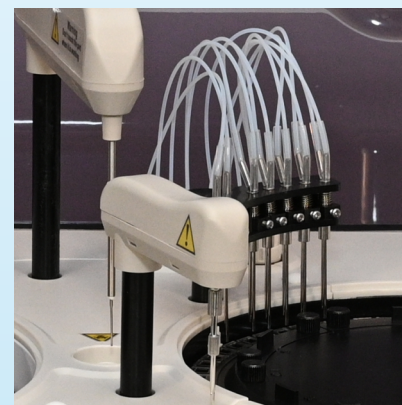


## LM 1015-200




### Automatic Random Access Bio Chemistry Analyzer

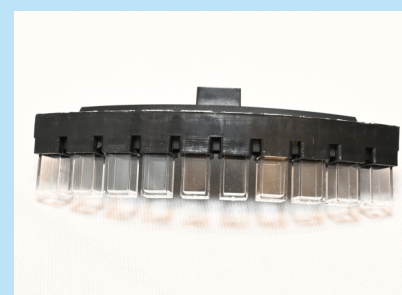
## FIRST-IN-CLASS ON-BOARD WARM-WATER LAUNDRY SYSTEM

-  In-built warm-water washing system ensures improved cleaning process and at the same time saving cost of additional consumables like detergents etc.
-  Automatic omni-directional 7-step cleaning and drying ensures thorough cleaning for accurate results.
-  Separate tubing for disposal of hard and soft water waste preventing errors due to carry-over.



## OTHER FEATURES

-  **“Intelligent” Mixing Arm**
  - User defined, variable three level mixing speed ensure thorough mixing
  - Accurate performance of regular and immuno turbidimetric assays
  - Independent cleaning station for mixer which prevents carry-over ensuring high precision
-  **Removable & Flexible Sample – Reagent Disc**
  - 40 Open position for reagent & samples respectively
  - Facility to use primary & variable sample cup as well as non fixed position for Sample, Control, Calibrator & STAT samples
  - Two bottle sizes of 18 mL or 5 mL with unique design to reduce reagent dead volume
  - Optional internal Reagent & Sample barcode reader makes the operation user friendly & ensure correct result reporting
  - Internal Reagent Bar code Scanning
-  **Reaction Tray**
  - 60 reusable plastic reaction cuvettes which is also scanned before performing the test which means less recurring cost without compromising on quality. To assure precise results
  - Individual replacement of cuvette offer lower consumable cost



## TECHNICAL SPECIFICATIONS

Throughput	Upto 200 Tests/hour
Principle	Photometry, Colorimetry
Analysis Method	End points, Fix-time (Two Points), Kinetic, Colorimetry, Turbidimetry, Multi-Standard etc.
Sample Disc	40 Sample positions, including Standard, QC and STAT positions can be use original tube (Primary tube) or Serum Cup
Advantage of Main Probe	Main probe can be worked for mixing Also.
Specific Water	Warm Water washing.
Goodness of Cuvettes	60 Reusable individual Cuvettes.
Water Consumption	Lowest Water consumption, 3-4 L/H only.
Multiple Logins	We can worked the instrument with own ID.
Sample Volume	2 to 50 $\mu$ L (Increment step by 0.1 $\mu$ L)
Reagent Disc	39 Reagent positions and 1 diluent position, 18ml reagent bottle with cooling system
Reagent Volume	R1: 150 $\mu$ L-300 $\mu$ L, R2: 10 $\mu$ L-250 $\mu$ L
Refrigeration	Yes, Cooling by Peltier & Liquid cooling system
Reaction Cuvettes	60 Reusable plastic cuvettes (optical path 5mm)
Reaction volume	100 $\mu$ L
	2 probes, one for integrated reagent / sample dispense, One for mixer
HbA1c Test	HbA1c with automated hemolysate preparation
Sample Probe	Liquid level detection Collision protection in both vertical and horizontal directions
Quality Control	Quality Control program with Levey Jennings chart, Multiple Lots, QC charts, etc.
Cleaning system	Automatic 7-step warm water washing
Light Source	Halogen-Tungsten Lamp (12V, 20W)
Wavelength	9 Positions provided between 300 - 700 nm
Photometry Range	0.0001-4.0000Abs
Reaction Temperature	37 $\pm$ 0.1 $^{\circ}$ C
Computer	External PC
Communication Interface	Instrument / Computer: RS-232C, Network Port (can be expanded)
Operating system	Windows XP or Windows 7,8,10, friendly interface
Power Supply	$\sim$ 100-220V, 50/60Hz (AC)
Dimensions	415mm(W) X 565mm(L) X 385mm(H)
Weight	28 Kgs

