

VET Smart 3-Diff Auto Hematology Analyzer

LM 1018



Multiple Animal Models
13 Animals such as

Cat, Dog, Pig, Rabbit, Horse,
Rat, Mouse, Monkey, Buffalo,
Sheep, Camel, Goat, Cattle
Cus1, Cus2, Cus3



Mfg. by.:

Lord's Mark Industries Limited

Caring Technology For Health-Care

Parameters	Precision	Linear Range	Contamination Range
WBC	≤2.0% (3.5-15.0x10 ⁹)/L	(0-100.0x10 ⁹)/L	≤0.5%
RBC	≤1.5% (3.0-6.0x10 ¹²)/L	(0.10-8.00x10 ¹² /L	≤0.5%
HGB	≤1.5% (100-180)/g/L	(0-250)g/L	≤0.6%
MCV	≤1.0% (70-120)fL	-	-
PLT	≤4.0% (150-500x10 ⁹)/L	(0-1000x10 ⁹)/L	≤1.0%

Characteristic

Compatibility

- 1) Two modes of sampling: Whole blood, pre diluted blood
- 2) Build-in thermal printer, external laser printer or inkjet printer;
- 3) 4 USB, 1 LAN support protocol HL7 and compatible with LIS system
- 4) Accompanying quality control material

Light

- 1) 390mm (L) x 285mm (W) x 390mm (H)
- 2) Weight ≤ 6kg

User-Friendly Design

- 1) 10.4" colourful touchscreen
- 2) Liquid crystal display
- 3) Resolution: 800x6001
- 4) 10" incline adapt to visual observation

Maintenance Friendly

- 1) Auto-cleaning of sample probe and tubes
- 2) Automatic fault processing function

Low Consume

- 1) Only need two reagents
- 2) Sample required ≤ 10uL

Efficient

- 1) Upto 60 samples per hour.



Specification

Principle

Electric impedance method and colorimetry method

Parameters

21 reportable parameters: WBC, LYM#, MID#, GRAN#, LYM%, MID%, GRAN% RBC, HGB, HCT, MCV, MCH, MCHC, RDW-CV, RDW-SD, PLT, MPV, PDW, PCT, P-LCR, P-LCC 3 histograms

Reagents

Build-in Lyse and External diluent, Probe cleaner for maintenance

Flag System

RBC, WBC, PLT abnormal sample and support customized test groups

Storage

Up to 50,000 results including histogram and patient information.

Quality Control

3 Level QC, L-J graph, X-B

Calibration

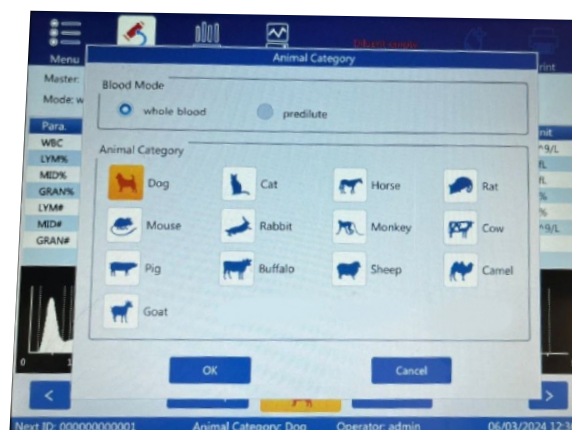
Manual and Auto-calibration

Accessories

Standard: keyboard, waste liquid barrel, ground wire (3m)
Option: mouse, external barcode scanner.

Environment

Working Voltage: AC 100V~240V, 50/60Hz
Rated Power: 40~60VA
Working Temperature: 10°C~35°
Relative humidity: 20%~85%



Manufactured by:



www.lordsmark.com
www.lordsmed.com



exportivd@lordsmark.com
cs.ivd@lordsmark.com



+91 8451060080



A-71, Royal Ind. Hub, Poman Kaman, Bhiwandi Road, Near Jain Temple, Vasai (E) Palghar - 401208.