



IVD PRODUCT CATALOGUE

2026-2027

MANUFACTURER OF IN-VITRO DIAGNOSTIC TEST KITS
OF THE HIGHEST QUALITY STANDARDS

Vision, Mission, Values



VISION

Delivering value to all stakeholders and partners by creating sustainable business to become globally recognized brand in diversified industries.



MISSION

To be recognized as one of the fastest growing business conglomerate through quality products, innovative approach and unbreakable trust.









VALUES

- Thrive on Opportunity
- Embrace Growth
- Speed of Light Execution
- Innovation & Collaboration



Lord's Mark- Business Units

LordsMed

IVD	Surgical
    <p>Launched more than 150+IVD products including Covid Antigen Rapid Kits Kit under brand name Lordsmed. Started Manufacturing of IVD Products at Vasai Near Mumbai.</p>	 <p>Started Surgical plant at Dadra near Vapi having state-of-the-art technology for manufacturing Crepe Bandage, EAB, Wet Wipes , Baby Wipes, Alcohol Swabs, Ortho Rehab Aids products having ISO 9001 & ISO 13485 certified unit since April 2024.</p>

Renal Care	Medtech
 <p>Renal Care is a focused on kidney health. It offers solutions across the spectrum of chronic kidney disease: early detection (screening for hypertension, diabetes, urine-test based CKD detection), in-center and home dialysis, remote monitoring, and a cloud-based renal information system to manage patient data. Its mission is to make dialysis and renal care affordable, accessible, and quality-driven, with an emphasis on innovation (like their "Renalyx" machine) and compassionate, patient-centred service.</p>	 <p>Renalyx brings you India's first's hemodialysis machine offeringsmart dialysis with remote monitoring and clinical connectivity. RxT 21 is an IoT enabled smart hemodialysis machine enabling telenephrology platforms and promotingpatient safety and quality care with realtime monitoring</p>

Energy

Solar	Smart Led Light
 <p>Lord's Mark Industries Limited is advancing clean energy through innovative and reliable solar solutions. Our systems are designed to deliver maximum efficiency, long-term performance, and sustainable power. We are committed to empowering homes, businesses, and communities with a greener energy future.</p>	 <p>Lord's Mark Industries Limited, we redefine lighting with innovative Smart LED technologies. Our products combine brightness, durability, and smart automation for enhanced user convenience. Built for the future, our LED solutions promote sustainability and smarter energy management.</p>

Paper

Our Paper Division produces items like reservation charts, train tickets, coupons, postal acknowledgment slips, defense stationery, etc.

Lord's Mark Industries Limited having group of companies with many business verticals spread across In-Vitro Diagnostics, MedTech, Pharma, Surgical, Solar & Innovative Products, Automotive, Insurance, MyDNA & Paper. To support our growing endeavors in the healthcare sector, we have inaugurated a cutting-edge diagnostic manufacturing facility spanning 25,000 square feet in Kaman, Vasai, Maharashtra.

LordsMed Range of products are being used by Government organizations, Hospitals (Public & Private) & Pathology via our 350 + strong distribution network Pan India with our dedicated 100+ sales team across India. Our IVD products include Bio-Chemistry Analyzer, 3 & 5 parts Hematology Analyzer..

We at LordsMed believe in achieving our goal by working hard and seizing the opportunity and hence have set a target to achieve 450+Cr. turnover by 2025.



Table of Content



CE

Semi Automatic Biochemistry Analyzer LM 1007 Pro


Page 6



CE

Semi Automatic Analyzer LM 1010 (LED OPTICAL)

Page 8



CE

Urine Analyzer LM 1023

Page 10



CE

Fully Automatic Biochemistry Analyzer LM 1022


Page 13



CE

Fully Automatic Biochemistry Analyzer LM 1015-200 (200 Tests Per Hour)

Page 17



CE

Fully Automatic Biochemistry Analyzer LM 1016-400 (400 Tests Per Hour)


Page 22



CE

Fully Automatic Biochemistry Analyzer LM 1021-800 (800 Tests Per Hour)

Page 27



CE

3 Part Hematology Analyzer LM 1011

Page 29



CE

5 Part Hematology Analyzer LM 1017

Page 33



CE

CLIA Immunoassay Analyzer

Page 37



CE

Electrolyte Analyzer LM 1024

Page 41



CE

VET Smart 3-Diff Automatic Hematology Analyzer LM 1018


Page 43



CE

VET Smart 5-Diff Automatic Hematology Analyzer LM 1019

Page 45



CE

Immunoassay Analyzer LM CLIA 1020

Page 47

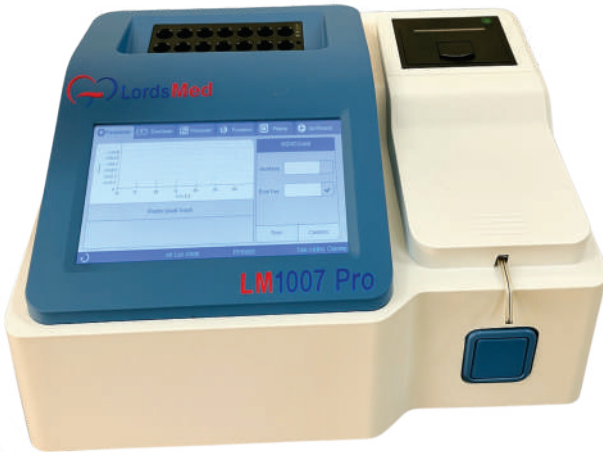


CE

Portable Automatic Biochemistry Analyzer LM 1026

Page 49

SEMI AUTOMATIC BIOCHEMISTRY ANALYZER LM 1007 Pro



Liver Function

(SGOT/SGPT, ALKP, GGT, ABL, BIL-DT, BIL TTL, etc)

Lipid Profile

(Cholesterol-TTL/HDL/LDL, Triglycerides, etc)

Kidney Function

(Creat, Urea (BUN), Uric Acid, Ca, Etc)

Diabetes & Others

(Hb, Glucose HbA1c, etc)

Immunoturbidimetry

HbA1c, ASO, CRP, RF, etc

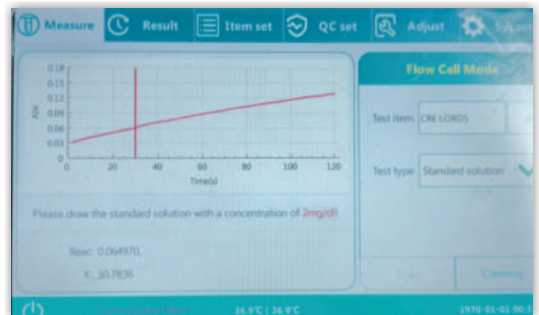
Electrolytes

(Na⁺, K⁺, Cl⁻, Ca⁺⁺, Phosphorous)

- ▶ COST-EFFECTIVE
- ▶ RELIABLE
- ▶ ROBUST
- ▶ PROVIDES EFFICIENT SOLUTIONS FOR CLINICAL DIAGNOSIS

- ▶ With 10 position incubator
- ▶ 7-inch color touch screen
- ▶ Humanized software interaction
- ▶ Customized testing items supported
- ▶ Storage up to 100,000 records
- ▶ Less and easy maintenance
- ▶ Real-time display of reaction curve

Two-Point Kinetic Graph



TECHNICAL SPECIFICATIONS

Principle	Colorimetry, Photometry, and Absorbance
Analysis Method	End Point Method, Kinetic Method, Two-Point Method, Multi-Standard Method Dual Wavelength Method, 2 Point Endpoint Method
Sample Type	Serum, Plasma, Urine, CSF
Flowcell	32 μ l Quartz Flow cell with 10mm Path Length
Filters	340nm, 405nm, 510nm, 546nm, 578nm, 630nm, Optional 2 Positions (450nm, 670nm)
Light Source	Halogen Lamp
Lamp Voltage	6V 10W
Sample Volume	Minium to Maximum : - 1 μ L to 5000 μ L
Display	LCD Touchscreen, Can operate with external mouse & keyboard
Output	Built-in thermal printer or External printer / 2 USB Port, 1 LAN Port
Quality Control	QC mode with L-J, X-R, X-B
Temperature	Pre-Incubator 37 Degree C., Colorimetric incubation System 25 $^{\circ}$, 30 $^{\circ}$ & 37 $^{\circ}$
Control	Use in Room Temperature
Sleep Fuction	Set the sleep time of the Halogen Lamp to extend its service life
Testing Mode	Flowcell / Cuvette
Absorbance Range	0.0001 to 4.000 Abs
Absorbance Accuracy	0.0001 Abs
Memory	Storage upto 100000 results with graph, QC, Calibrator, Program Open program with 120 programs can be done
Power Supply	DC 12 V, 6A
Interface	Equipped with standard USB Interface
Size	340mm(D)*260mm(W)*142mm(H)
Net Weight	4.6 Kg



SEMI AUTOMATIC ANALYZER (LED OPTICAL) LM 1010



LED SOURCE
VERY LONG LIFE
EXTREME PRECISION



NO FILTERS
NO MOVING PART



ZERO MAINTENANCE
DUSTPROOF DESIGN



SAVE ON ANNUAL
MAINTENANCE
REDUCE COST PER
TEST BY HALF



Liver Function

(SGOT/SGPT, ALKP, GGT, ABL, BIL-DT, BIL TTL, etc)

Lipid Profile

(Cholesterol-TTL/HDL/LDL,
 Triglycerides, etc)

Kidney Function

(Creat, Urea (BUN), Uric Acid, Ca, Etc)

Diabetes & Others

(Hb, Glucose HbA1c, etc)

Immunoturbidimetry

HbA1c, ASO, CRP, RF, etc

Electrolytes

(Na⁺, K⁺, Cl⁻, Ca⁺⁺, Phosphorous)

Optical
WARRANTY
5 years*

SPECIAL FEATURES

- ◆ 7 Wavelengths LED based Light Source
 (For tests at 340, 405, 505, 545, 580, 630, 670nm.)
- ◆ Graphic Display with Online Graph for Kinetic Assays
- ◆ LOWEST reagent Volume of 300µl (0.300ml) ONLY..!!
- ◆ Intelligent Error Trapping System for abnormal samples.
- ◆ Self Testing for Optical & SCAN mode for research.
- ◆ Patient ID & Lab Name Entry
- ◆ Even Operational on 12V Battery

SEMI AUTOMATIC ANALYZER (LED OPTICAL) LM 1010

TECHNICAL SPECIFICATIONS

OPTICAL SPECIFICATIONS

Light Source LED based For Tests performed at 7 wavebands from 340nm to 670nm.

Photometric Range 0.0001 to 3.500 Abs

Flow Cell 32µl Quartz Flow cell with 10mm Path Length

Reagent Volume Minimum of 350 µl (0.350ml).

PROGRAMMING

Measurement Moss Kinetic, Fixed Time, End Point, Multi-Standard Calibration, Monochromatic & Bi-Chromatic

Memory 100 User defined Programs, 1000 Storage Data Results Memory

INPUT/OUTPUT INTERFACE

Keyboard Spill-Proof Membrane Keyboard

Thermal Printer 57mm paper Easy Load with Quick Action Hatch.

Output Serial Port (RS - 232) Output Direct connectivity to External Printer and Computer.

Self testing Automatic self testing of entire optical system for all wavelengths in configure.

THERMOSTAT SYSTEM

Temperature RT & 37°C Temperatures with +/-0.5 °C. Precision

Thermostat Digitally Controlled Solid State Sensor and Heater

POWER, BATTERY BACK-UP & DIMENSIONS

Power Supply AC Mains: 180 V to 240 V AC, 50 Hz

Battery Backup DC: 10 V to 18 V DC 1A, (12V Battery Backup runs for Continuously)

Operating Req. Room Temperature: 10°C to 35 °C. Protect from Direct Sunlight.

Dimensions L: 320mm x W: 270mm x H: 125mm Appx.

Weight 1.5kg Appx & 4.5Kg Approx along with Packaging

ADVANTAGES OF CUVETTE MODE Vs ASPIRATION MODE

- **No Bubble Formation Errors**
- **No Pump calibration**
- **Very low reagent volume reduces expenditure**
- **No Moving part hence no Mechanical failure**
- **Very fast readings as, No Cleaning Cycle, No Mechanical Errors, No Reagent wastage, No warm-up period**
- **More number of tests performed including Hb, turbidity, Electrolytes**
- **No Vibrations of moving parts**
- **Noiseless operation**



Urine Analyzer LM 1023



- 10 And 14 Parameters Strip Options Inbuilt Printer
- Better supported for outside testing
- One Touch Operation
- Small in size Touch screen



Portable

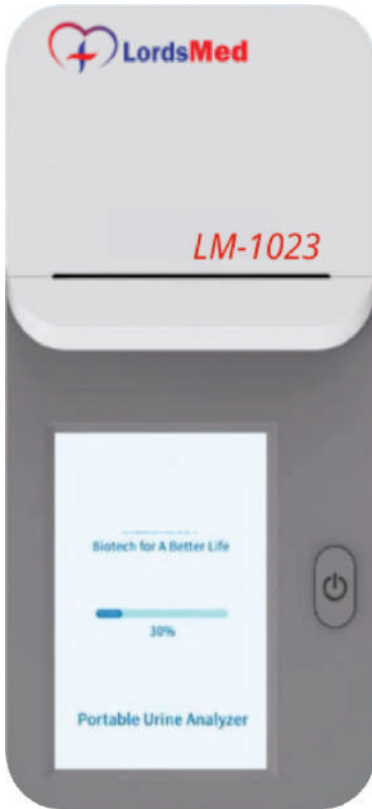


High-efficient



Smart

Features



Easy to Operate

One-click Operation, click "start" to complete automatically

Rapid

14 Items in 60s

Tiny and Portable

178 mm 87 mm 46 mm, 360g

Intelligent Calibration

Automatic Color Compensation

Large Battery Capacity

4-hour Continuous Working

Scenarios



Laboratory



Clinics



Outdoor Rescue



Hospitalization & E.R



Family doctor



Ambulance

Function



a) Power Switch

b) Built-in Printer

c) Touch Display

d) Type-C Interface

e) Loading stage

Operations



Step. 1

Sample Loading



Step. 2

Reaction



Step. 3

Determination

Parameters of the Device

Device

Urine Analyzer

Detection Principle

Dual Wavelength Reflection Method

Sample Type

Urine

Size

178 mm*87 mm*46 mm

Weight

360g

Test Item

LEU

URO

mAlb

PRO

BIL

GLU

ASC

SG

KET

NIT

CRE

pH

BLO

CA

FULLY AUTO BIOCHEMISTRY ANALYZER

LM 1022-100

The Smallest in the World!



System Function

- Throughput 100-120T/H(Single/double/reagent)
- Analysis method Two Point, end point, Kinetic
- Analysis Item 200 colorimetric items

Sample & Reagent system

- Sample Position 20 + 2 Postions upto 71
- Sample & reagent probe 1 independent probe with strring function
- Sample Volume 3-100ul, 0.1ul stopping
- Sample & reagent probe Liquid level detection technogy X-Y-Z dispensing system
- Sample & reagent probe Automatic washing both cleaning interior and
- Reagent Position 50 positions, refrigerated reagent tray
- Reagent Volume 15-300ul. Lu stepping
- Reagent bottle 20ml

Reaction System

- Cuvette Specification Optical diameter is 5.8mm
- Reaction Volume 180 ul *500ul
- Reaction Temperature 37 C
- Wastewater treatment Waste liquid level alarming (optional)
Delon water level alarming (optional)
- Reaction Curvotte Cleaning Auto water washing

Optical System

- Light Source 10W/6V halogen lamp
- Spectrophoto metry Forward
- Wavelength 8 wavelengths: 340nm, 405nm, 450nm 510nm, 546nm, 578 nm, 630nm, 700nm
- Absortion range 0-3.5Abs
- Resolution 0.0001Abs

Calibration and QC

- Throughput 100-120T/H(Single/double/reagent)
- Analysis method Two Point, end point, Kinetic
- Analysis Item 200 colorimetric items

Operating System

- Operating system Windows XP / Windows 7 / Win 8
- Interface Standard RS-232
- Language Multi - language

Working Conditions

- Power Supply AC110/220V/, 50/60Hz, 300W
- Temperature 15-30 C
- Humidity 35-80 C
- Water Consumption 3L/Hour

Weight & Size

- Dimensions 520mmX512mmx440mm
- Net Weight 37 kg.



Fully Automatic Biochemistry Analyzer LM 1022 - 100 System Pack

S. No.	Product Name	Pack Size	Test Per Kit
1	Albumin	5x20 ml	300
2	ALP	4x20 + 1x20 ml	375
3	Amylase	5x20 ml	375
4	Glucose	5x20 ml	300
5	Creatinine	4x20 + 1x20 ml	450
6	Total Protein	5x20 ml	300
7	Bilirubin	2x20 + 2x20 + 1x10 ml	300
8	Calcium	5x20 ml	300
9	Chloride	5x20 ml	300
10	Total Cholesterol	5x20 ml	300
11	SGOT	4x20 + 1x20 ml	300
12	SGPT	4x20 + 1x20 ml	300
13	Phosphorus	5x20 ml	300
14	Sodium	5x20 ml	375
15	Triglyceride	5x20 ml	240
16	Urea UV	4x20 + 1x20 ml	1000
17	Uric Acid	5x20 ml	300
18	Potassium	5x20 ml	300
19	Creatinine Mono	5x20 ml	300
20	CRP Turbi	4x20 + 1x20 ml	300

Fully Automatic Biochemistry Analyzer LM 1022 - 100 System Pack

S. No.	Product Name	Pack Size	Test Per Kit
21	HDL Direct	3x20 + 1x20 ml	300
22	LDL Direct	3x20 + 1x20 ml	375
23	HBA1C with cal	3x20 + 1x20 ml	375
24	HBA1C without cal	3x20 + 1x20 ml	300
25	Gamma GT	4x20 + 1x20 ml	450
26	Creatinine	3x20 + 1x20 ml	300
27	Enzymatic	4x20 + 1x20 ml	300
28	LDH	4x20 + 1x10 ml	300
29	ADA	3x20 + 1x20 ml	300
30	Magnesium	5x20 ml	300
31	CK-MB	5x20 + 5x5 ml	300
32	Iron	4x20 + 1x3 ml	300
33	CK-NAC	4x20 + 1x20 ml	300

EMPOWER YOUR LABORATORY

LM 1015-200

Automatic Random Access Clinical Biochemistry Analyzer



DESIGNED FOR UNINTERRUPTED WORK FLOW

Probe with Collision-Protection System

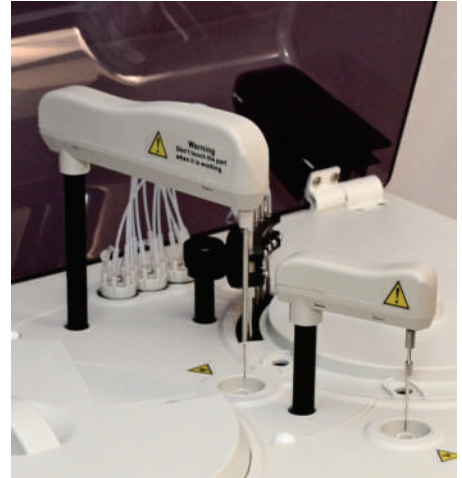
Both horizontal and vertical collision protection ensures that system re-starts testing after any unwanted physical intervention. This prevents wastage of reagents, saves test time and increases life of probe.

Multi Functional Probe

Probe has flexibility to work even as a mixer in case in-built mixer does not work.

Probe With Capacitance Based Liquid Level Sensor

Probe with liquid level sensor checks and indicates the presence of adequate sample or reagent in the container before starting testing process. Thus prevents unwanted interruptions in testing process.



ROBUST MULTI-FUNCTIONAL SOFTWARE

Reflex Testing Functionality

Allows user to program Low & High panic value for a particular test which triggers auto-testing of assigned tests which ensures faster and comprehensive reporting.

Dynamic & Real-time Display Of Test Running Status For Quicker Decision Making

- Running status of reagent tray, sample tray & reaction tray
- Real-time monitoring of Reaction curve

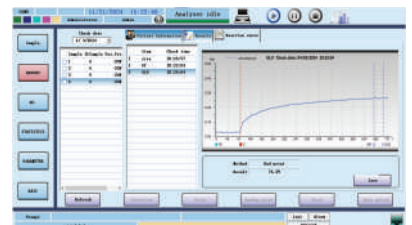
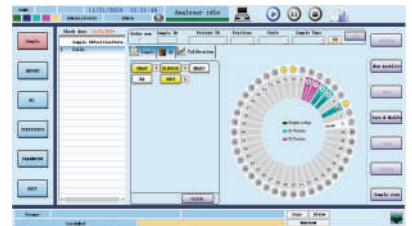
On Board Inventory Management

Real-time monitoring of reagent residual volume saves reagent cost & time




In-built Full QC Program

- Provision to run 3 levels of control with Levey Jennings graph which gives confidence in reporting with multiple rules (1SD, 2SD and 3SD)
- Reagent, Calibrator & Control lot monitoring

User Friendly Bi-Directional Lis Interface



FIRST-IN-CLASS ON-BOARD WARM-WATER LAUNDRY SYSTEM

-  In-built warm-water washing system ensures improved cleaning process and at the same time saving cost of additional consumables like detergents etc.
-  Automatic omni-directional 7-step cleaning and drying ensures thorough cleaning for accurate results.
-  Separate tubing for disposal of hard and soft water waste preventing errors due to carry-over.



OTHER FEATURES

"Intelligent" Mixing Arm

- User defined, variable three level mixing speed ensure thorough mixing
- Accurate performance of regular and immuno turbidimetric assays
- Independent cleaning station for mixer which prevents carry-over ensuring high precision



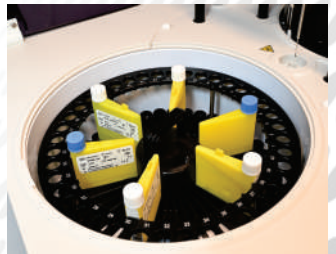
Removable & Flexible Sample – Reagent Disc

- 40 Open position for reagent & samples respectively
- Facility to use primary & variable sample cup as well as non fixed position for Sample, Control, Calibrator & STAT samples
- Two bottle sizes of 18 mL or 5 mL with unique design to reduce reagent dead volume
- Optional internal Reagent & Sample barcode reader makes the operation user friendly & ensure correct result reporting
- Internal Reagent Bar code Scanning



Reaction Tray

- 60 reusable plastic reaction cuvettes which is also scanned before performing the test which means less recurring cost without compromising on quality. To assure precise results
- Individual replacement of cuvette offer lower consumable cost



TECHNICAL SPECIFICATIONS

Throughput	Upto 200 Tests/hour
Principle	Photometry, Colorimetry
Analysis Method	End points, Fix-time (Two Points), Kinetic, Colorimetry, Turbidimetry, Multi-Standard etc.
Sample Disc	40 Sample positions, including Standard, QC and STAT positions can be use original tube (Primary tube) or Serum Cup
Sample Volume	2 to 50 μ L (Increment step by 0.1 μ L)
Reagent Disc	39 Reagent positions and 1 diluent position, 18ml reagent bottle with cooling system
Reagent Volume	R1: 150 μ L-300 μ L, R2: 10 μ L-250 μ L
Refrigeration	Yes, Cooling by Peltier & Liquid cooling system
Reaction Cuvettes	60 Reusable plastic cuvettes (optical path 5mm)
Reaction volume	180 μ L~350 μ L (increment by 1 μ L) 2 probes, one for integrated reagent / sample dispense, One for mixer
Sample Probe	Liquid level detection Collision protection in both vertical and horizontal directions
Quality Control	Quality Control program with Levey Jennings chart, Multiple Lots, QC charts, etc.
Cleaning system	Automatic 7-step warm water washing
Light Source	Halogen-Tungsten Lamp (12V, 20W)
Wavelength	9 positions provided between 300 - 700 nm
Photometry Range	0.0001-4.0000Abs
Reaction Temperature	37 \pm 0.1 $^{\circ}$ C
Computer	External PC
Communication Interface	Instrument / Computer: RS-232C, Network Port (can be expanded)
Operating system	Windows XP or Windows 7,8,10, friendly interface
Power Supply	~100-220V, 50/60Hz (AC)
Dimensions	415mm(W) X 565mm(L) X 385mm(H)
Weight	28 Kgs

Fully Automatic Biochemistry Analyzer LM 1015 - 200 System Pack

S. No.	Product Name	Pack Size	Test Per Kit
1	Albumin	5x20 ml	300
2	Alkaline phosphatase -IFCC { AMP}	5x20 + 5x5 ml	375
3	SGPT	5x20 + 5x5 ml	375
4	Amylase	5x20 ml	300
5	SGOT	5x20 + 5x5 ml	450
6	Bilirubin Total & Direct	2x20+2x20 +2x5 ml	300
7	Calcium (Arsenazo)	5x20 ml	300
8	Glucose	5x20 ml	300
9	Inorganic Phosphorus	5x20 ml	300
10	Cholesterol	5x20 ml	300
11	Triglycerides	5x20 ml	300
12	Total Protein	5x20 ml	300
13	Uric Acid	5x20 ml	300
14	Urea U.V	5x20 + 5x5 ml	375
15	Creatinine - Jaffee	2x20 + 2x20 ml	240
16	Alkaline washing solution [without Lic No]	1000 ml	1000
17	Chloride	5x20 ml	300
18	Sodium	5x20 ml	300
19	Potassium	5x20 ml	300

LM 1016-400

Fully Automatic Clinical Biochemistry Analyzer



**THROUGHPUT UP TO
480 TEST/HOUR**



- Fully Automated Clinical Biochemistry Analyzer.
- Floor model, Compact design, Quick Analysis
Throughput up to 480 test /hour.

Easy to Operate, Smart System

- 3 Independent Probes: 1 for Sample & 2 for Reagents.
- 2 Independent Mixers to avoid carry over & cross contamination.

LM 1016-400 is Fully Automated Clinical BioChemistry Analyzer with 480 test / hour throughput, high performance suitable for mid-size & high workload laboratories.



Sample/Reagent Tray

- 80 Reagent Positions (R1 & R2)
- 100 sample positions (sample/QC/STAT)
- Sample position capable of loading sample cups & primary tubes
- Onboard Refrigeration facility (2-8)°C for Reagents

Sample/Reagent Probe

- 3 Independent probes: 2 Reagent Probe, (R1 & R2 Separate Probe), 1 Sample Probe.
- Liquid level detection
- Vertical probe anti-collision prevention



Mixer Assembly

- Teflon coated Mixers
- 2 Independent Mixers for high accuracy & precision

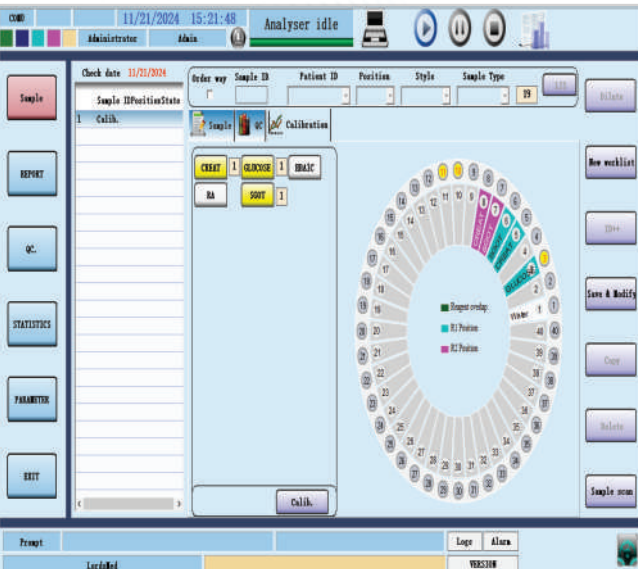


Laundry System

- Adopt 8 stage 16 brittle technology
- Deep needle outer wall nano light treatment, inner wall with PTEE coating, three dimensional thick vortex cleaning.
- Automatic cuvette dry facility
- Water consumption - 8L/hr

Detection & Optical System

- Optical sources- Halogen Tungsten Lamp
- 9 Wavelength (300-700nm) + 1 extended
- 80 Reaction cuvettes
- Absorbance Range : 0.0001 to 4.0 Abs



QC & Calibration

- Multi QC function
- LJ plots & Westgard rules available
- Optimum calibration curve
- Multi point - Linear, Non- linear Calibration Method

Software System

- User convenient software
- Online monitoring of reagent volume
- Online reaction curve monitoring

Technical Specification

System	– Random access, Discrete, Floor model	Optical system	– Array- type rear-optical and photo-electric detection system 9 wavelength (300-700nm) can extended + 1 Abs Range: 0.0001 to 4.0 Abs
Principle	– Photometry, Colorimetry	Light source	– 12v, 20w Halogen Tungsten lamp
Analysis Method	– End Points, Fixed-time/2 Point Kinetic, Kinetic Turbidimetry, Multi - STD	QC/Calibration	– Single Point, Two Point, Spline, Logit-log, 4P, 5P
Throughput	– 480 Test / Hour	Operating System	– Windows 7 & above
Samples Dics	– 100 samples positions (Sample, QC, STAT) Sample volume - 2-50 µl, 0.1 µl Stepping Primary Tube or Serum Cup	Power supply	– 100-230V Ac+ _50/60 HZ(Ac)
Reagents	– 80 reagent positions 24-hour refrigeration(2-8 C) Reagent Volume-10 - 300 µl Single reagent and double reagent Internal Reagent Bar code Scanning	Dimension	– 980*820*1180mm (length*width*height)
Probe system	– 3 Independent Probes, 1 for Sample & 2 for Reagent Independent Mixers 2	Weight	– 168Kg
Laundry system	– Adopt 8-stage 16 brittle cleaning technology Water Consumption-8 Lit/hr		
Detection system	– 80 cuvettes		

- Wide range of Clinical Chemistry Reagent
- Good Onboard Stability of System pack
- Liquid Stable System pack.
- Packsize option suitable to meet customer needs

LM 1021-800

Fully Automatic Clinical Biochemistry Analyzer



- Fully Automated Clinical Biochemistry Analyzer.
- Floor model, Compact design, Quick Analysis
Throughput up to 800 test /hour.

Easy to Operate, Smart System

- 3 Independent Probes: 1 for Sample & 2 for Reagents.
- 2 Independent Mixers to avoid carry over & cross contamination.

QC & Calibration

- Multi QC function
- LJ plots & Westgard rules available
- Optimum calibration curve
- Multi point - Linear, Non- linear Calibration Method

Software system

- User convenient software
- Online monitoring of reagent volume
- Online reaction curve monitoring

Technical specification:

System	- Random access, Discrete, Floor model	Optical system	- Array- type rear-optical and photo-electric detection system 8 wavelengths (300-700nm) can expanded Abs Range:0.5.04 Abs
Throughput	- 800 test /hr	Light source	- 12v,20w Halogen Tungstan lamp
Samples	- 100 samples positions (Sample, QC, STAT) Sample volume - 2-50µl, 0.1µl	QC/Calibration	- Tri-level QC All calibration modes including Multipoint calibration modes
Reagents	- 80 reagent positions Reagent Volume-10 - 300µl 24-hour refrigeration(2-8 C)	Operating System-	Windows 7 & above
Probe system	- 3Independent Probes, 1 for Sample & 2 for Reagent (R1, & R2) 2 Independent Mixers	Power supply	- AC220+ _10% 50HZ 800VA
Laundry system	- Adopt 8-stage 16 brittle cleaning technology Water Consumption-20Lit/hr	Dimension	- 980*820*1180mm (length*width*height)
Detection system-	160 Reaction cuvettes	Weight	- 210Kg



- **Wide range of Clinical Chemistry Reagent**
- **Liquid Stable Systempak.**
- **Packsize option suitable to meet customer needs**
- **Good Onboard Stability of Systempak**

Fully Automatic Biochemistry Analyzer LM1016-400/LM1021-800 System Pack

Product Name	Pack Size	Test per Kit
Albumin	2X70	420
Alkaline phosphatase -DGKC	1X60 + 1X15	225
SGPT	1X60 + 1X15	225
Amylase	2X70	420
ASO	1X60 + 1X15	225
SGOT	1X60 + 1X15	225
Bilirubin Direct	1X60 + 1X15	225
Bilirubin Total	1X60 + 1X15	225
Calcium (Arsenazo)	2X70	420
Enzymatic Creatinine	1X60 + 1X20	240
CRP Turbilatex	1X60 + 1X15	225
Gamma GT	1X60 + 1X15	225
Glucose	2X70	420
HbA1c Direct	1X60 / 1X20	240
HDL-C Direct	1X60 + 1X20	240
LDH – P	1X63 + 1X07	210
LDL-C Direct	1X60 + 1X20	240
Inorganic Phosphorus	2X70	420
RF Turbilatex	1X60 + 1X15	225
Cholesterol	2X70	420
Triglycerides	2X70	420
Total Protein	2X70	420
Uric Acid	2X70	420
Urea U.V	1X60 + 1X15	225
CK-NAC	1X60 + 1X15	225
Creatinine Jafee	2X70	420
FERRITIN	1X60 + 1X15	225
Alkaline washing solution	1x1000 mL	5000
Ammonia	1X60 + 1X15	225

3 PART HEMATOLOGY ANALYZER LM 1011



EXPERIENCE
THE
EFFICACY



((t-e-))

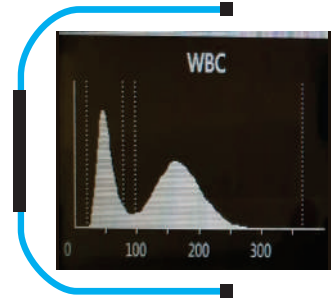


**New Generation
 3 Part Differential
 Hematology Analyzer**

BENEFITS

State-of-the-Art Technology for Absolute Accuracy of Results:

- Gold Standard Electrical Impedance Technology for measuring WBC, RBC & PLT
- Cell pulse base line tracking and restore technology for anti-interference and accurate results
- High voltage burning technology ensures no clogging
- Intelligent floating threshold for reliable result



Special Parameters: PLCC, PLCR

- PLCC (Platelet Large Cell Concentration) & PLCR (Platelet Large Cell Ratio) An indicator of microcytic RBC or clumped platelets indicating possible thrombosis



Intelligent Maintenance System:

- Automatic fault detection and fault elimination
- Advance flagging system
- Built-in Liquid sensor technology for monitoring reagent level
- Effective QC management system for enhanced performance



Simple & Effective Design:

- Minimum Hydraulics & PCBs
- High quality pumps
- Special Lyse Compartment



EFFECTIVE FEATURES

EXPERIENCE

THE

EFFICACY

LM 1011

New Generation 3 Part Differential Hematology Analyzer



High Accuracy & Reliability

- State-of-the-art technology ensures absolute accuracy of results
- Whole Blood (WB) mode as well as Pre-dilute (PD) mode for low sample volume
- Intelligent flagging system
- Superior and high quality pumps

User Friendly Design and Easy Operation

- A versatile and powerful software with ease In operation
- Large 10.4" LCD colour touch screen with facility to attach external mouse and keyboard
- On-board graphic printer with a facility to attach external printer, optional LIS facility

Smart Maintenance System

- Alarm system for insufficient of reagents
- Smart alarm system for Indication of any error during operation
- Automatic fault detection helps in taking corrective action by eliminating the errors

Safe & Secure

- Two reagents system (Diluent & Lyse) for complete results, Special Lyse Compartment
- Effective Probe cleaner for maintenance
- Non-toxic & biodegradable reagent system



3 PART HEMATOLOGY ANALYZER LM 1011

TECHNICAL SPECIFICATIONS

Throughput	60 T/hr
Display	10.4 Inch LCD touch screen
Principles & Technologies	WBC, RBC & PLT: Impedance, HGB: Colorimetric
Number of Parameters	21+3 histograms
Parameters	WBC: LYM#, MID#, NEUT#, LYM%, MID%, NEUT%, RBC, HGB, HCT, MCV, MCH, MCHC, RDW-CV, RDW-SD, PLT, MPV, PDW, PCT, PLCR, P-LCC ,
Histograms	3: WBC (3-part differential), RBC, PLT
Sample Volume	WB mode: 10 μ l, Pre-dilute: 10 μ l
Performance Linearity	WBC: 1.0-99.9 $\times 10^9$ /L, RBC: 0.1-8.0 $\times 10^{12}$ /L HGB: 20-250g/L, PLT: 3-999 $\times 10^7$ /L
Data Storage	50,000 results with histogram
Reagents	Diluent: 20L, Lyse: 500ml, Probe cleaner: 50ml Diluent & lyse: Sample analysis Probe cleaner: Maintenance
Peripheral Options	Internal Thermal Printer, Optional External Printer, Optional USB Mouse & Keyboard, 4 USB ports, LIS
Power Supply	100-230 VAC, 50/60 Hz \leq 150 VA
Operating Environment	Temperature: 10°C to 35°C, Relative Humidity: 20%-85%
Dimension	430mm* 280mm* 400mm (D*W*H)
Blockage Clear	High voltage, high pressure flush
Net Weight	16 Kg

5 PART HEMATOLOGY ANALYZER LM 1017



3
Reagents



3 ⇌ 5
3-Part & 5-Part
all-in-one



60
Samples Per Hour

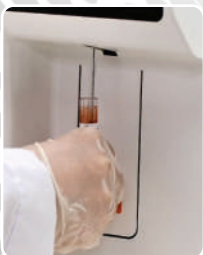
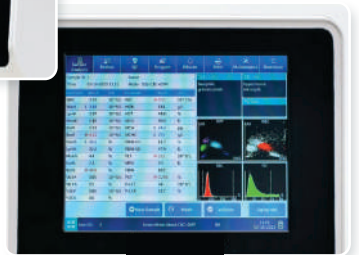


AUTOMATIC 5 PART HEMATOLOGY ANALYZER

LM 1017 is a compact analyzer that offers fast and high-quality CBC testing for clinics and laboratories. With a 29-parameter complete blood count at the push of a button, the makes on-site hematology easy and affordable.

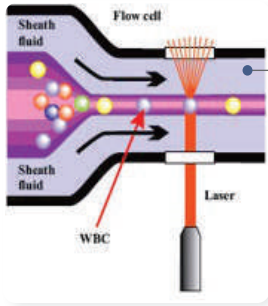
COMPACT AND POWERFUL

- Space-saving compact design
- Up to 60 samples per hour
- 10.4 inch large touch screen
- 29 parameters + 4 scattergrams + 2 histograms



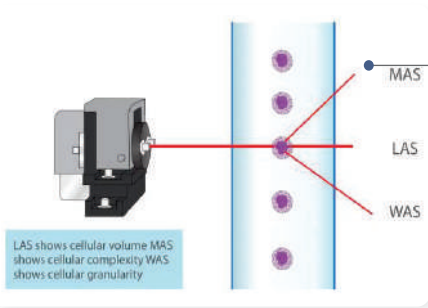
EASY TO USE

- One button analysis
- Cutting-edge technology
- Dual WBC differential channels
- Smart maintenance system



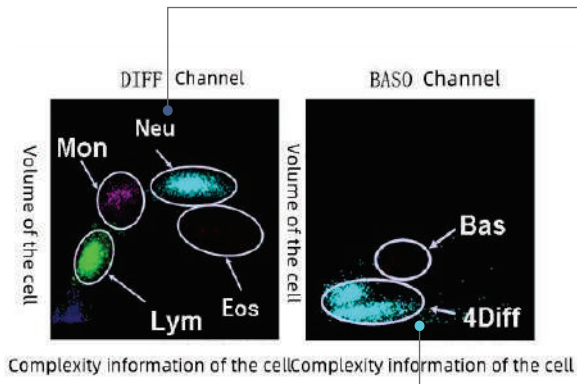
DUAL ACCELERATION FLOW CELL SYSTEM

Reduces the velocity gap between sheath flow and blood cells, providing a more stable signal for accurate measurement via laser scatter



LATEST INNOVATION TRI-ANGLE LASER SCATTERING

The tri-angle laser scattering contributes to more accurate counting. The optical detector receives scatter light signals and converts them into electrical pulses.



CHEMICAL DYE METHOD BY ORIGINAL REAGENTS

The basophils and eosinophils are differentiated by the unique chemical dye method. The reagents, control and calibrator materials act as one complete system to ensure high accuracy in differentiating between basophils and eosinophils

TWO SEPERATE CHANNELS TO DIFFERENTIATE WBC

Counts lymphocyte, monocyte, neutrophil and eosinophil in Diff channel, and basophil in a separate Baso channel. Optical method to test Basophil provides more reliable information about cell physiology.

TECHNICAL SPECIFICATIONS

Principles

WBC

Flow Cytometry (FCM) + Laser light scatter + Cytochemical staining method

RBC/PLT

Electrical impedance method

HGB

Non-Cyanide colorimetric method

Parameters

25 report parameters

WBC, Bas#, Bas%, Neu#, Neu%, Eos#, Eos%, Lym#, Lym%, Mon#, Mon%, RBC, HGB, HCT, MCV, MCH, MCHC, RDW-CV, RDW-SD, PLT, MPV, PDW, PCT, P-LCR, P-LCC.

4 research parameters

ALY#, ALY%, LIC#, LIC%

2 histograms for RBC, PLT

4 scattergrams for WBC differential

Performance

Parameter	Linearity Range	Precision	Carryover
WBC	0 to 300 x 10 ⁹ cells/L	≤2% (3.5-15×10 ⁹ /L)	≤0.5%
RBC	0 to 8 x 10 ¹² cells/L	≤1.5% (3.5-6.0×10 ¹² /L)	≤0.5%
HGB	0-250g/L	≤1.5% (110-180g/L)	≤0.6%
PLT	0 to 3 x 10 ¹² cells/L	≤6.0% (100-149×10 ⁹ /L) ≤4.0% (150-500×10 ⁹ /L)	≤1.0%

Throughput

Up to 60 samples per hour

Display

10.4 inch Color touch screen

Date Storage Capacity

Up to 50,000 results memory with scattergrams and histograms

Communication

LAN port supports HL7 protocol

Interface

4 pcs USB ports, 1 pc Ethernet port
Support uni-directional LIS
Support printers, keyboard, mouse, barcode scanner

Sample volume

Whole blood mode: 20μL
Capillary Whole blood mode: 20μL
Prediluted mode: 20μL

Printout

External Laser printer / Inkjet printer / thermal printer
various printout formats and user-defined formats

Operating Environment

Temperature: 10-30°C Humidity: 70% max

Machine Dimension and Weight

Width x Height x Depth: 325mm*465mm*470mm
Weight: 30Kg

Package Dimension and Weight

Length x Width x Height: 630mm*490mm*630mm
Weight: 35Kg

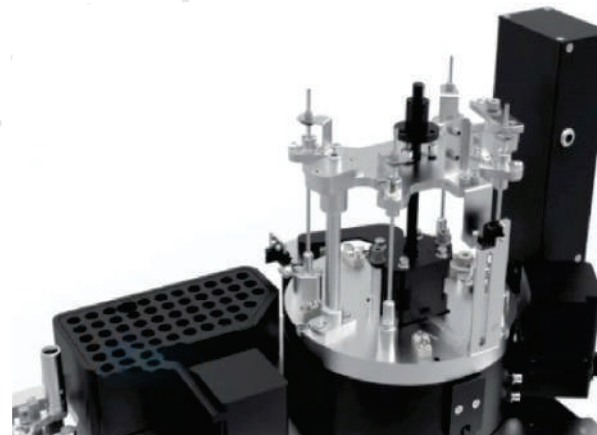
Reagents

Diluent: 20L×1
Lyse: 60DIFF(500mL×1), 60LH(100mL×1)
Probe cleanser: 100mL×2



CLIA

Immunoassay Analyzer



A Compact and Innovative Chemiluminescence Solution

As one of the world's smallest, fully automated chemiluminescence immunoassay analyzers, the LM1020 integrates a large capacity and fast assay speed into a compact model, achieving a perfect balance between size and immunoassay testing performance.

Today, laboratories not only need more reliable routine Immunoassay testing by way of high processing speed, reproducibility, dependability, accuracy & quality for wider clinical correlation and diagnosis. On the other hand, they are restricted by limited budgets. LM 1020 can help to meet all these needs just perfectly and even exceed the expectations.



Technology

- Measurement principle: Enhanced ALP-AMPPD method
- Throughput of up to 180 tests/hour
- 50 sample positions and 15 reagent positions



Ease of Operation

- Only one start key
- Real-time consumables status monitoring



Efficient Management

- Continuous loading of samples, reagents, substrates and cuvettes
- User maintenance free, with no hidden cost



Reagent Assembly

- 15 Reagent positions, continuous loading, real time mixing for magnetic particles
- 2~8 °C cooling system
- Built in & external barcode reader



Assay Parameters

- Calibration stability of 28 days
- Ready to use reagents



Sample Assembly

- Continuous sample loading and offloading
- 50 sample positions

TEST MENU

Thyroid

FT3
FT4
T3
T4
TSH
Anti-TG
Anti-TPO
Tg
rT3
TRAB*

Infectious Disease

HIV Combo
HBsAg
Anti-BHs
BHeAg
Anti-HBe
Anti-HBc
Anti-HBc
Anti-HCV
anti-TP (Syphilis)
HBeAg quantitative*
Anti-HBcIgM*

Fertility

Total β -HCG
FSH
LH
Prolactin
E2
E3
TESTO
PROG
Free testosterone
17-OH PROG
SHBG*
AMH

Tumor marker

CEA
AFP
CA 125
CA 15-3
CA 19-9
FPSA
TPSA
NSE
CYFRA 21-1
CA 72-4
PG I
PG II
SCCA
HE4
ProGRP
CA 50
CA 242

Bone

Intact PTH
Calcitonin
Osteocalcin
25-OH Vitamin D

Cardiac

CK-MB
Myoglobin
Troponin I
BNP
NT - Pro BNP

Diabetes

Insulin
C-peptide

Adrenal Function

DHEA-S
Cortisol
ACTH

Liver Fibrosis

LN
HA
PIIINP
CIV

ToRCH

Toxo IgG
Toxo IgM
rubella IgG
Rubella IgM
CMV IgG
CMV IgM
HSV - 1/2 IgG
HSV - 1/2 IgM
HSV - 1 IgG
HSV - 2 IgG

Anemia

Ferritin
Vitamin B12
Folate
RBC Folate

Hypertension

Angiotension I*
Angiotension II*
Renin*
Aldosterone*

Growth Hormone

hGH*
IGF-1*

Inflammation

PCT

DS' Screening

PAPP-A*
Free β -HCG*

Technical Specifications

General Information

Throughput	Up to 180 tests/hour
Measurement Principle	Micron superparamagnetic particles platform With alkaline phosphatase (ALP) labeled reagents And AMPPD substrate

Sample Assembly

Sample Feeder	Continuous sample loading and offloading
Sample positions	50
Sample Probe	Steel probe, liquid level detection, clot detection, Horizontal and vertical collision protection
Sample Volume	10~200ul, with increment of 1ul
Sample Dilution	Automatic dilution with 1:2-1:40

Reagent Assembly

Reagent Disk	15 reagent positions, continuous loading, real-time mixing for magnetic particles
Cooling System	2~8 °C
Reagent Pack	50 tests/pack, 100 tests/pack
Reagent Scanning	Build-in/External bar code reader
Reagent Probe	Steel probe, liquid level detection, clot detection, Horizontal and vertical collision protection
Reagent Volume	10~200ul, with increment of 1ul

Substrate System

Substrate Bottle	500 tests per bottle, bottom piercing
Substrate Loading	Capable of continuous loading during testing
Substrate Heating	Constant heating
Aspiration Volume	200ul

Magnetic separation unit

Separation Assembly	3-phase magnetic separation
Temperature	Accuracy : $37 \pm 0.3^{\circ}\text{C}$

Measurement and Reaction System

Detection Mode	Photon counting
Signal Detector	Photomultiplier (PMT) photo counter
PMT Calibration	LED reference module
Incubation positions	82
Temperature	Accuracy : $37 \pm 0.3^{\circ}\text{C}$
Mixing Unit	Non-touch vortexer mixing

Cuvette Loading Waste Collection

Cuvette	Disposable Plastic cuvette
Cuvette	88 cuvettes per tray, 2 trays can be loaded in one batch, continuous loading and offloading
Waste collection	Waste container, 200 cuvettes per box

Working conditions

Power Supply	100-240V-50/60Hz
Input Power	500VA
Operating Temperature	15~30°C
Relative Humidity	35% RH~85%RH, without condensation
Dimension	860mm*740mm*560mm (W*D*H)
Weight	132Kg
Altitude Height	-400m~3000m (70kpa)



ELECTROLYTE ANALYZER LM 1024



Analyzer's Advantages



Easy to Operate



Accurate Results



Minimal Maintenance



Economical

- | Measuring Time 40 Seconds
- + _____
- | Alphanumeric Keypad
- + _____
- | Minimal Sample Volume (100µL)
- + _____
- | Long Life & Maintenance Free Electrodes

Product specifications

Measurement principle: Ion Selective Electrode(direct method)

Sampling mode: Manual

Sample type: Serum, Plasma, Whole Blood,Diluted Urine

Minimum sample volume: 100 μ L

Analysis speed: 40 seconds/test

Model: FT-330A,FT-330B,FT-330C,FT-330D

Measurement performance:

Item	Measuring range	Resolution	Precision(CV)
K ⁻	0.50 ~20.00 mmol/L	0.01	1.0%
Na ⁺	15.0 ~200.0 mmol/L	0.1	1.0%
Cl ⁻	15.0 ~200.0 mmol/L	0.1	1.0%
Ca ²⁺	0.10 ~6.00 mmol/L	0.01	1.0%
Li ⁺	0.10 ~6.00 mmol/L	0.01	1.0%
pH	4.0 ~9.0	0.01	1.0%

Calculating parameter: n-Ca(standardized ionic calcium)、T-Ca(total calcium)

Calibration mode: Fully automatic calibration

Display: 800×480 Color LCD display

Operation mode: English menu, touch screen

Printer: Built-in thermal printer

Data storage: More than 300 test results

External interface: RS-232C data interface×1、USB2.0 barcode scanner interface×1

Power: 88~264VAC, 47~63Hz, Input Power: 50VA

Working temperature: 10~30°C , Relative humidity: ≤85%

Dimension(H×W×D): 33cm×29cm×25cm, Weight:8kg

Product features

- High-quality ISE measurement system, samples are directly measured, the sensor is completely maintenance-free, and the life span is more than 1 year.
- One sampling, getting the result of K⁺、Na⁺、Cl⁻、Ca²⁺、Li⁺、pH,as well as the results of n-Ca (standardized ion calcium) and T-Ca (total calcium) in the sample within 40 seconds.
- Automatic calibration and automatic tracking of electrode status ensure the reliability of test results at any time.
- It adopts 5-inch color LCD touch screen,resolution ratio 800×480 and man-machine interactive operation interface.
- All fluidic system with solenoid valve, washing the sample channels automatically to reduce clog and carryover into low level.
- Advanced optical sample detector is adopted to adapt to different types of samples.
- The instrument has complete QC function and Correct function.QC sample results can be statistically analyzed and quality control charts can be provided, and two types of calibration products can also be used to calibrate the instrument.
- It has a complete data management system, which can store more than 300 sample test results, and can be connected to any type of LIS / HIS system.
- The fully enclosed integrated reagent package with intelligent identification function reduces the risk of biological pollution and has the function of residual reagent monitoring.

VET Smart 3-Diff Automatic Hematology Analyzer LM 1018



Multiple Animal Models
13 Animals such as

Cat, Dog, Pig, Rabbit, Horse,
Rat, Mouse, Monkey, Buffalo,
Sheep, Camel, Goat, Cattle
Cus1, Cus2, Cus3



Parameters	Precision	Linear Range	Contamination Range
WBC	≤2.0% (3.5-15.0x10 ⁹)/L	(0-100.0x10 ⁹)/L	≤0.5%
RBC	≤1.5% (3.0-6.0x10 ¹²)/L	(0.10-8.00x10 ¹² /L	≤0.5%
HGB	≤1.5% (100-180)/g/L	(0-250)g/L	≤0.6%
MCV	≤1.0% (70-120)fL	-	-
PLT	≤4.0% (150-500x10 ⁹)/L	(0-1000x10 ⁹)/L	≤1.0%

Characteristic

Compatibility

- Two modes of sampling: Whole blood, pre diluted blood
- Build-in thermal printer, external laser printer or inkjet printer;
- 4 USB, 1 LAN support protocol HL7 and compatible with LIS system
- Accompanying quality control material

Light

- 390mm (L) x 285mm (W) x 390mm (H)
- Weight≤6kg

User-Friendly Design

- 10.4" colourful touchscreen
- Liquid crystal display
- Resolution: 800x600i
- 10" incline adapt to visual observation

Maintenance Friendly

- Auto-cleaning of sample probe and tubes
- Automatic fault processing function

Low Consume

- Only need two reagents
- Sample required≤10uL

Efficient

- Upto 60 samples per hour.



Specification

Principle

Electric impedance method and colorimetry method

Parameters

21 reportable parameters:
WBC, LYM#, GRAN#, LYM%, MID%, MID%, GRAN% RBC, HGB, HCT, MCV, MCH, MCHC, RDW-CV, RDW-SD, PLT, MPV, PDW, PCT, P-LCR, P-LCC 3 histograms

Reagents

Build-in Lyse and External diluent, Probe cleaner for maintenance

Flag System

RBC, WBC, PLT abnormal sample and support customized test groups

Storage

Up to 50,000 results including histogram and patient information.

Quality Control

3 Level QC, L-J graph, X-B

Calibration

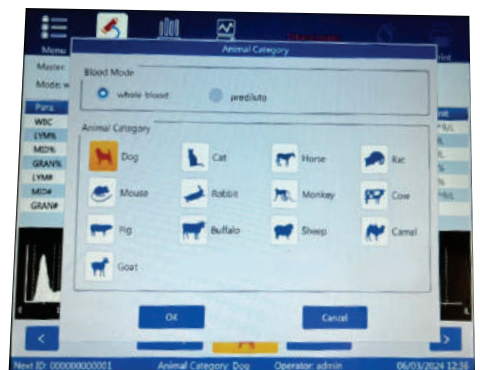
Manual and Auto-calibration

Accessories

Standard: keyboard, waste liquid barrel, ground wire (3m)
Option: mouse, external barcode scanner.

Environment

Working Voltage: AC 100V~240V, 50/60Hz
Rated Power: 40~60VA
Working Temperature: 10°C~35°
Relative humidity: 20%~85%



VET Smart 5-Diff Automatic Hematology Analyzer

LM 1019



Multiple Animal Models
13 Animals such as

Cat, Dog, Pig, Rabbit, Horse,
Rat, Mouse, Monkey, Buffalo,
Sheep, Camel, Goat, Cattle
Cus1, Cus2, Cus3



Parameters	Precision	Linear Range	Contamination Range
WBC	≤2.0% (3.5-15.0x10 ⁹)/L	(0-100.0x10 ⁹)/L	≤0.5%
RBC	≤1.5% (3.0-6.0x10 ¹²)/L	(0.10-8.00x10 ¹² /L	≤0.5%
HGB	≤1.5% (100-180)/gL	(0-250)g/L	≤0.6%
MCV	≤1.0% (70-120)fL	-	-
PLT	≤4.0% (150-500x10 ⁹)/L	(0-1000x10 ⁹)/L	≤1.0%

Characteristic

Compatibility

- Two modes of sampling: Whole blood, pre-diluted blood
- Three modes of test: CBC, CBC+5Diφ and CBC+5Diφ+RRBC
- External printer or thermal printer
- 4 usb, 1 LAN support protocol HL7 and compatible with LIS system
- Accompanying quality control material

Light

- 500mm(L)x320mm(W)x390mm(H)Light
- Weight 25KgUser-friendly Design

Maintenance Friendly

- Auto-cleaning of sample probe and tubes
- Automatic fault processing functionLow Consume

User-friendly Design

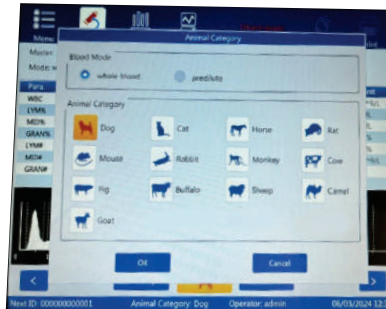
- 10.4"colorful touchscreen
- Liquid Crystal Display
- Resolution 1024x768
- 10° incline adapt to visual observation Maintenance Friendly

Low Consume

- Only need three reagents
- Sample consumed ≤20uEfficient

Efficient

60 samples per hour06 1045



Specification

Principle

Electric impedance method and colorimetry method

Parameters

25 reportable parameters:
WBC, LYM#, MID#, GRAN#, LYM%, MID%, GRAN% RBC, HGB, HCT, MCV, MCH, MCHC, RDW-CV, RDW-SD, PLT, MPV, PDW, PCT, P-LCR, P-LCC 3 histograms

Environment

Working Voltage: AC 100V~240V, 50/60Hz
Rated Power: 40~60VA
Working Temperature: 10°C~35°C
Relative humidity: 20%~85%

Storage

Up to 50,000 results including histogram and patient information.

Quality Control

3 Level QC, L-J graph, X-B

Calibration

Manual and Auto-calibration

Accessories

Standard: keyboard, waste liquid barrel, ground wire (3m)
Option: mouse, external barcode scanner.

Flag System

RBC, WBC, PLT abnormal sample and support customized test groups

Reagents

Build-in Lyse and External diluent, Probe cleaner for maintenance





LM CLIA 1020

Immunoassay Analyzer



LM CLIA 1020

Immunoassay Analyzer

Rheumatism

- RF
- Anti-CCP

Inflammation

- HBP
- PCT
- CRP+hs-CRP
- SAA
- IL-6

Bone

- 25-OH VD
- BGP
- PTH

Thyroid

- TT4
- FT4
- TT3
- FT3
- Anti-TG
- Anti-TPO
- TSH

Anemia

- Ferr
- EPO
- FA
- VB12

Renal Function

- Cys-C
- Renin
- ALD
- Cortisol
- ACTH
- β 2-MG

Growth Hormone

- IGF-1
- GH
- IGFBP-3

Reproductive

- AMH
- LH
- FSH
- PRL
- β -HCG
- T
- PAPP-A
- E2
- Prog

Allergy

- Total IgE

Gastric Function

- H.Pylori IgG
- PG I
- PG II
- G-17

Cardiovascular

- Lp-PLA2
- H-FABP
- NT-proBNP
- D-Dimer
- MYO
- CKMB
- MPO
- Hs-cTnI
- hs-cTnT
- BNP

Thrombus

- FDP
- TAT
- TM
- PIC
- tPAIC

Blood Glucose

- INS
- C-P

Tumor

- VEGF
- AFP
- CEA
- CA125
- CA15-3
- HE4
- CA19-9
- CA72-4
- CA242
- NSE
- proGRP
- CYFRA21-1
- CA50
- SCC
- TPSA
- fPSA

Infectious Diseases

- Anti-TP
- HBsAg
- HBsAb
- HBcAb
- HBeAb
- HBeAg
- Anti-HCV
- HIV Ag/Ab Combo

LAUNCHING SOON



Portable Automatic Biochemistry Analyzer

LM 1026



High Sensitivity



Accurate Results



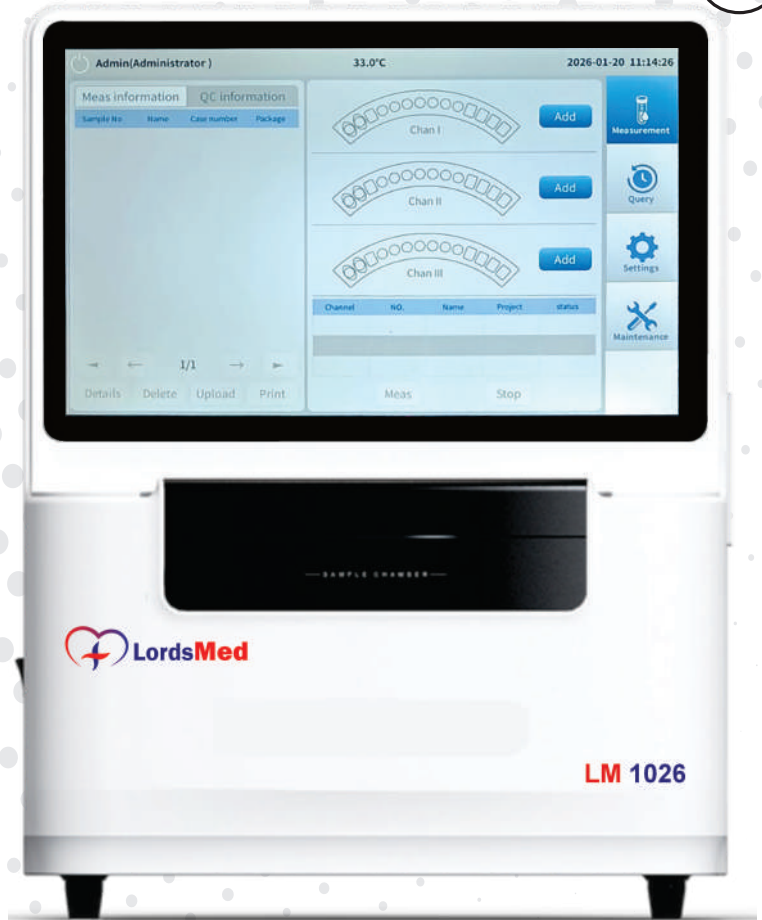
Fast & Efficient



User Friendly



Reliable Performance



HIGH SENSITIVITY CHROMOGENIC ASSAY

Biochemical testing is essentially a chromogenic reaction when a substance undergoes a chemical reaction.

The concentration of substance in the reaction liquid can be determined by measuring the absorbance of light from sample in real time. Thus, the reaction process can be traced accordingly.



Test Parameters

Coagulation

Fib PT TT APTT

Cardiac Biomarker

D-dimer

Blood Lipids

TC TG HDL-C LDL-C

Hepatic Function I

ALB ASTALT TB

Glycosylated Hemoglobin

HbA1c

Inorganic Ions I

Ca Mg P

Digestive System Screening

TBA CHE α -AMY

Kidney Function

CREA UA UREA Glu

Inflammation

CRP CCP RF ASO

Diabetes Mellitus

Glu GA

Hepatic Function II

ALP GGT DB TB

Chronic Disease Screening

Glu HCY UA LDL-C

Inorganic Ions II

Na Cl CO₂ k



Specifications

Analysis Methods Endpoint method, rate method

Temperature Control Colorimetric incubation system 37 oC

Absorbance Range 0 ~ 4.0 A

Absorbance Repeatability CV \leq 1.5%

Sample Type Serum, plasma, whole blood, urine, etc.

Reaction Vessels Cuvette

Light Source High intensity discharge lamp

Interface USB * 2, LAN * 1

Output Built-in thermal printer or external printer

Channel Three testing channels

Storage 100,000 tests

Power Supply AC 100V-240V, 50/60 Hz, 1.5A

Dimensions 387 mm (L) * 293 mm (W) * 379 mm (H)

Weight 12.0 \pm 1 KG

LordsMed (Products Range)

» Rapid Test Kits

Extensive range of lateral flow Immunochromatography tests with High sensitivity and specificity

» Biochemistry Reagents

Reliable and cost effective liquid stable reagents

» Specific Protein Chemistry Reagents, Turbidimetry Kits

Excellent Quality, High Performance

» Serology Kits

Superior Agglutination with high sensitivity

» Urine Strips Kits

Comprehensive range of test parameters available with high sensitivity and specificity

» Hematology Reagents for LM 1011 Closed system

Diluent, Lyse, Probe Cleaner, RFID Card
Generic Diluent & Lyse for 3 Part Hematology Analyser

**EXTENSIVE RANGE OF LATERAL FLOW
IMMUNOCHROMATOGRAPHY TESTS WITH HIGH SENSITIVITY AND SPECIFICITY**

LordsMed Rapid Test

Product code	Product Name	Pack Size
HCGLMR01	WonderNews Pregnancy hCG Rapid Test	50T
LHSLMR01	Luteinizing Hormone (LH) Rapid Test Kit	25T
LHSLMR02	Luteinizing Hormone (LH) Rapid Test Kit	50T
DABLMR01	Dengue IgG/IgM Ab Rapid Test Kit	10T
DABLMR02	Dengue IgG/IgM Ab Rapid Test Kit	25T
TABLMR01	Typhoid IgG/IgM Ab Rapid Test Kit	25T
TABLMR02	Typhoid IgG/IgM Ab Rapid Test Kit	50T
CHKLMR01	Chikungunya IgM Ab Rapid Test Kit	10T
CHKLMR02	Chikungunya IgM Ab Rapid Test Kit	25T
MPVLMR01	Malaria Pf/Pv Ag Rapid Test Kit	25T
MPVLMR02	Malaria Pf/Pv Ag Rapid Test Kit	50T
DNSLMR01	Dengue Ns1 Rapid Test Kit	25T
DNSLMR02	Dengue Ns1 Rapid Test Kit	50T
DCMLMR01	Dengue Combo (NS1 Ag + IgG/IgM Ab) Rapid Test Kit	10T
DCMLMR02	Dengue Combo (NS1 Ag + IgG/IgM Ab) Rapid Test Kit	25T
MPNLMR01	Malaria Pf/PAN Ag Rapid Test Kit	25T
MPNLMR02	Malaria Pf/PAN Ag Rapid Test Kit	50T
HIVLMR01	HIV 1 & 2 Rapid Test	25T
HIVLMR02	HIV 1 & 2 Rapid Test	50T
HCVLMR01	HCV Rapid Test Kit	25T
HCVLMR02	HCV Rapid Test Kit	50T
HBSLMR01	HBsAg Rapid Test	25T
HBSLMR02	HBsAg Rapid Test	50T
SYPLMR01	Syphilis Rapid Test	25T
SYPLMR02	Syphilis Rapid Test	50T
CVDLMR01	Covid - 19 Ag Rapid Test	25T
CVDLMR02	Covid - 19 Ag Rapid Test	50T
LM00087	Leptospira IgG/IgM	10T
LM00088	Leptospira IgG/IgM	25T
LM00093	TroponinI	25T
LM00093	TroponinI	50T
SKCLMR02	Sickle Cell HbS, HbA and HbC Rapid Test	25T/50T

RAPID TEST KITS (Product Specifications)

Malaria Antigen Test (Pf/Pv)

INTENDED USE	Malaria Pf/Pv antigen test is a rapid test for qualitative detection of <i>Plasmodium vivax</i> (Pv) and <i>Plasmodium falciparum</i> (Pf) in human blood. It is for in-vitro diagnostic use only.
ACTIVE INGREDIENTS	Monoclonal anti pLDH (Pv specific) and anti-HRP-II (Pf specific)
SPECIMEN OF CHOICE	Whole blood
STORAGE CONDITION	2-30°C
SENSITIVITY	100%
SPECIFICITY	100%

Malaria Antigen Test (Pf/PAN)

INTENDED USE	Malaria Pf/PAN Antigen test is a rapid test for qualitative detection. P.vivax, P.ovale & P. Malarie) and <i>Plasmodium falciparum</i> (Pf) in human blood. It is in-vitro diagnostic use only.
ACTIVE INGREDIENTS	Monoclonal anti-pLDH(PAN specific) and anti pHRP-II Pf specific
SPECIMEN OF CHOICE	Whole blood
STORAGE CONDITION	2-30°C
SENSITIVITY	100%
SPECIFICITY	100%

Dengue Combo Test

INTENDED USE	Dengue combo test is a rapid card test device for qualitative and differential detection of dengue antigen (NS-1) and antibody (IgG/IgM) in human Wb/S/p
ACTIVE INGREDIENTS	Mouse Monoclonal anti dengue NS-1, rabbit IgG, recombinant antigen of dengue, anti human IgM, protein-A (Anti human / WB IgG)
SPECIMEN OF CHOICE	Whole blood/Serum/plasma
STORAGE CONDITION	2-30°C
SENSITIVITY	SENSITIVITY Ag=98-0% Ab=96.66%
SPECIFICITY	SPECIFICITY Ag =100%& Ab =100%

Dengue Antibody Test

INTENDED USE	Dengue IgG/IgM rapid test device is a qualitative test for detection of IgM and IgG antibody to dengue virus in human Wb/S/P
ACTIVE INGREDIENTS	Recombinant antigen of dengue, anti human IgM, protein - A
SPECIMEN OF CHOICE	Whole blood/Serum/plasma
STORAGE CONDITION	2-30°C
SENSITIVITY	96.66%
SPECIFICITY	100%

Dengue NS1 Antigen Test

INTENDED USE	Dengue NS1 antigen test is a rapid card test for qualitative detection of NS-1 antigen in human serum/Plasma/WB for early diagnosis of dengue.
ACTIVE INGREDIENTS	Mouse Monoclonal anti dengue NS-1 and rabbit IgG
SPECIMEN OF CHOICE	Whole blood Serum/plasma
STORAGE CONDITION	2-30°C
SENSITIVITY	98%
SPECIFICITY	100%

HCV Test

INTENDED USE	HCV test is one step rapid test for qualitative detection of antibodies to HCV (Hepatitis C Virus) in human Wb/S/P
ACTIVE INGREDIENTS	NCM and gold conjugate coated with HCV recombinant antigens, Goat anti mouse IgG as control line reagent
SPECIMEN OF CHOICE	Whole blood Serum/plasma
STORAGE CONDITION	2-30°C
SENSITIVITY	100%
SPECIFICITY	100%

HIV-1 & 2

INTENDED USE	HIV-1 & HIV-2 Test is rapid, qualitative, sandwich immuno- assay for simultaneous and differential detection of total antibodies (IgM/IgG/IgA) to HIV (Human immunodeficiency virus). It is for in- Vitro use only.
ACTIVE INGREDIENTS	Highly purified antigens- gp41/gp120 representing HIV-1, gp-36 representing HIV-2
SPECIMEN OF CHOICE	Whole blood/Serum/plasma
STORAGE CONDITION	2-30°C
SENSITIVITY	100%
SPECIFICITY	100%

HBsAg Test

INTENDED USE	HbsAg test is one step rapid test for qualitative detection of Specific Hepatitis B Surface antigen to Hepatitis B in human Wb/S/P
ACTIVE INGREDIENTS	Monoclonal anti- HBs Ag antibodies & anti rabbit IgG
SPECIMEN OF CHOICE	Whole blood/Serum/plasma
STORAGE CONDITION	2-30°C
SENSITIVITY	100%
SPECIFICITY	100%



RAPID KITS (Product Specifications)

LH/ Ovulation Test

INTENDED USE	LH/ OVULATION Test is a rapid test based upon sandwich immunoassay for qualitative detection of luteinizing hormone (LH) in human urine as an aid for the early detection of ovulation. For professional use only.
ACTIVE INGREDIENTS	LH Monoclonal antibodies
SPECIMEN OF CHOICE	Urine
STORAGE CONDITION	2-30°C
SENSITIVITY	98%
SPECIFICITY	99.5%

HCG Pregnancy Rapid Test

INTENDED USE	Wondernews test device is rapid, qualitative, two site sandwich immunoassay for the determination of human chorionic gonadotropin (hCG), a marker for pregnancy, in urine specimens.
ACTIVE INGREDIENTS	Anti HCG antibody & anti rabbit IgG
SPECIMEN OF CHOICE	Urine
STORAGE CONDITION	2-30°C
SENSITIVITY	98.18%
SPECIFICITY	100%

Cardiac Troponin-Test

INTENDED USE	Troponin-I is an in- vitro diagnostic test for the qualitative detection of cardiac Troponin-I (cTnI) in human serum/ plasma.
ACTIVE INGREDIENTS	Monoclonal anti cTn-I
SPECIMEN OF CHOICE	Serum/Plasma
STORAGE CONDITION	2-30°C
SENSITIVITY	98% (0.5 ng per ml)
SPECIFICITY	98%

Syphilis Device Test

INTENDED USE	Syphilis/ TP Test Device is an in vitro diagnostic rapid test for qualitative detection of antibodies (IgG/IgM/IgA) to Treponema pallidum (TP) a marker for diagnosis of syphilis. For professional use only.
ACTIVE INGREDIENTS	Recombinant antigen of TP
SPECIMEN OF CHOICE	Whole blood/Serum/plasma
STORAGE CONDITION	2-30°C
SENSITIVITY	87%
SPECIFICITY	

Chikungunya Test

INTENDED USE	Chikungunya IgM test is an vitro diagnostic rapid test for simultaneous and differential detection of chikungunya specific antibody (IgM) in human serum/Plasma/WB diagnosis of chikungunya infection.
ACTIVE INGREDIENTS	Monoclonal anti human IGM
SPECIMEN OF CHOICE	Whole blood/Serum/plasma
STORAGE CONDITION	2-30°C
SENSITIVITY	96-66%
SPECIFICITY	100%

Covid 19 Antigen

INTENDED USE	Covid Antigen Test is a one - step rapid, qualitative, sandwich immunoassay. It is used for the detection of SARS-nCOV-2infection in Nasopharyngeal Specimen
ACTIVE INGREDIENTS	Covid antigen Monoclonal antibody and rabbit IgG.
SPECIMEN OF CHOICE	Nasal swab
STORAGE CONDITION	2-30°C
SENSITIVITY	98.67%
SPECIFICITY	98.0%

Typhoid (IgG/IgM) Test

INTENDED USE	Typhoid IgM /IgG Test Device is an in vitro diagnostic rapid test for differential detection of IgM and IgG antibodies salmonella typhi (S.typhi) in human serum, plasma or whole blood.
ACTIVE INGREDIENTS	Anti human IgM/IgG
SPECIMEN OF CHOICE	Whole blood/Serum/plasma
STORAGE CONDITION	2-30°C
SENSITIVITY	98-21%
SPECIFICITY	100%

RELIABLE AND COST EFFECTIVE LIQUID STABLE REAGENTS

Hematology Reagent LM- 1011

Product Code	Product Name	Pack Size
DILLMS01	Diluent	1X20 LTR
LYSLMS01	LYSE	1X500 ML
PRBLMS01	Probe Cleaner	1X50 ML



RELIABLE AND COST EFFECTIVE LIQUID STABLE REAGENTS

BIOCHEMISTRY REAGENTS:

Product Code	Product Name	Pack Size
ALBMS01	Albumin Test Kit	2X50 ML
ALPLM01	Alkaline Phosphate Test Kit	1X25 ML
ALPLMS02	Alkaline Phosphate Test Kit	2X25 ML
ALPLMS03	Alkaline Phosphate Test Kit	4X25 ML
AMYLMS01	Amylase Test Kit	25X1 ML
AMYLMS02	Amylase Test Kit	1X25 ML
GLULMS01	Glucose Test Kit	5X100 ML
GLULMS02	Glucose Test Kit	2X500 ML
CRTLMS01	Creatinine Test Kit	2X50 ML
CRTLMS02	Creatinine Test Kit	4X50 ML
TTPLMS01	Total Protein Test Kit	2X50 ML
TTPLMS02	Total Protein Test Kit	4X50 ML
BILLMS01	Bilirubin (T&D) Test Kit	4X25 ML
BILLMS02	Bilirubin (T&D) Test Kit	2X50 ML
CALLMS01	Calcium (ARS III) Test Kit	25X1 ML
CALLMS02	Calcium (ARS III) Test Kit	50X1 ML
CLOLMS01	Chloride Test Kit	25X1 ML
CLOLMS02	Chloride Test Kit	2X25 ML
CLOLMS03	Chloride Test Kit	4X25 ML
CHOLMS01	Total Cholesterol Test Kit	4X25 ML
CHOLMS02	Total Cholesterol Test Kit	4X50 ML
GGTMS01	Gamma GT Test Kit	2X50 ML
GGTMS02	Gamma GT Test Kit	1X25 ML
GOTLMS01	GOT/AST Test Kit	2X25 ML
GOTLMS02	GOT/AST Test Kit	4X25 ML
GOTLMS03	GOT/AST Test Kit	1X25 ML
GPTLMS01	GPT/AST Test Kit	2X25 ML
GPTLMS02	GPT/AST Test Kit	4X25 ML
GPTLMS03	GPT/AST Test Kit	1X25 ML
PPTLMS01	HDL Cholesterol (PPT) Test Kit	2X25 ML
HDLLMS01	HDL Cholesterol (Direct) Test Kit	1X40 ML
MICLMS01	Microprotein Test Kit	25X1 ML
PHOLMS01	Phosphorus Test Kit	25X1 ML
PHOLMS02	Phosphorus Test Kit	1X25 ML
SODLMS01	Sodium Test Kit	25X1 ML
TGLLMS01	Triglycerides Test Kit	4X25 ML
TGLLMS02	Triglycerides Test Kit	4X50 ML
URULMS01	Urea UV Test Kit	2X25 ML
URULMS02	Urea UV Test Kit	2X50 ML
URBLMS01	Urea Test Kit (Mod Berthelot)	2X50 ML
URCLMS01	Uric Acid Test Kit	2X10 ML
URCLMS02	Uric Acid Test Kit	5X10 ML
POTLMS01	Potassium Test Kit	25X1 ML
LDLLMS01	LDL Cholesterol (Direct) Test Kit	1X40 ML

Routine Biochemistry



Total Cholesterol



CK-NAC



Uric Acid



GOT/AST



GPT-ALT



Creatinine Test

Special Biochemistry



HbA1c Turbilatex



Widal Slide Test



CRP Turbilatex

RELIABLE AND COST EFFECTIVE LIQUID STABLE REAGENTS

CHEMISTRY REAGENTS:

Product code	Product Name	Pack Size
LM00109	Ammonia	5x5 ml
LM00110	Angiotensin Converting Enzyme (ACE)	4x5 ml
LM00111	Bicarbonate	4x5 ml
LM00112	Cholinesterase	2x40/2x10 ml
LM00113	CK MB	2x8/2x2 ml
LM00114	CK NAC	2x8/2x2 ml
LM00115	Fructosamine	1x12/1x4ml
LM00116	Gamma GT	2x40/2x10 ml
LM00117	Lactate	4x5 ml
LM00118	LordsMed LDH	2x40/2x10 ml
LM00119	LordsMed Lipase	2x10/2x2 ml
LM00120	Total Bile Acid	1x11.25/1x3.75/1x30
LM00121	Alpha-1- Microglobulin With Cal	1x30/1x10 ml
LM00122	Anti CCP	1x15/1x5 ml
LM00123	Apo A1- With cal	1x30/1x10ml
LM00124	Apo B - With cal	1x30/1x10ml
LM00125	Apo E - With cal	1x30/1x10ml
LM00127	Beta-2-Microglobulin - With Cal	1x40/1x10ml
LM00128	C3 - With cal	1x30/1x10ml
LM00129	C4 - With cal	1x30/1x10ml
LM00130	Cystanin C - With cal	1x40/1x10ml
LM00131	D-Dimer - With cal	1x30/1x10ml
LM00132	Ferittin Kit	1x30/1x10ml
LM00135	Hs -CRP - With cal	1x40/1x10ml
LM00136	IgA - With cal	1x30/1x10ml
LM00137	IgE - With cal	1x20/1x10ml
LM00138	IgG -With cal	1x30/1x10 ml
LM00139	IgM - With cal	1x30/1x10 ml
LM00140	Procalcitonin-With cal	1x30/1x10 ml
LM00141	Retinol Binding Protein-With cal	1x30/1x10ml
LM00147	Ammonia	10x1 ml
LM00148	Alpha Amylase	10x1 ml
LM00149	Bicarbonate	10x1ml

SUPERIOR AGGLUTINATION WITH HIGH SENSITIVITY

LORDSMED SEROLOGY KITS

Product Code	Product Name	Pack Size
LM00063	RF Latex	50 T
LM00234	RF Latex	25 T
LM00064	CRP Latex	50 T
LM00235	CRP Latex	25 T
LM00066	ASO Latex	50 T
LM00065	ASO Latex	25 T
LM00067	Widal Slide test 4x5ml	4 x5ml
LM00068	Widal Slide test 2+2x5ml	2+2x5ml
LM00076	Lords Clone Anti ABD	3x10 ml

Turbidimetry

Product Code	Product Name	Pack Size
LM00069	RF Turbilatex	50 ml
LM00070	CRP Turbilatex	50 ml
LM00126	ASO Turbilatex	50 ml
LM00133	HbA1c (Direct) - With cal	1x30/1x10/4x1ml
LM00134	HbA1c (Direct) - Without cal	1x30/1x10ml

COMPREHENSIVE RANGE OF TEST PARAMETERS AVAILABLE WITH HIGH SENSITIVITY AND SPECIFICITY

LORDSMED URINE STRIPS

Product Code	Product Name	Pack Size
LM00041	2 P Glucose/Protein	100 T
LM00042	2 P Glucose/Ketone	100 T
LM00043	Urine Strip 3 P Protein, /Ketones/Glucose	100 T
LM00044	Urine Strip 10 P Leukocytes /Nitrites/ Urobilinogen/ Protein, pH/Blood/ Specific Gravity/ Ketones/ Bilirubin/ Glucose	100 T



LORDSMED ELISA

Sr.No.	Product
1	Dengue IgG Antibody Elisa
2	Dengue IgM Antibody Elisa Test Kit
3	Dengue NS1 Antigen Elisa Test Kit
4	Hepatitis B Surface Antigen (HBsAg) Elisa Test Kit
5	HCV 3rd Generation Elisa Test Kit
6	HCV 4th Generation Ag & Ab Elisa Test Kit
7	HIV 3rd Generation Elisa Test Kit
8	HIV 4th Generation Ag & Ab Elisa Test Kit
9	Malaria Antigen Elisa Test Kit
10	Syphilis Antibody Elisa Test Kit
11	Beta HCG Elisa Test Kit
12	Lepto IgM ELISA Test Kit
13	Chikungunya IgG Antibody ELISA Test Kit
14	Chikungunya IgM Antibody ELISA Test Kit
15	T3 ELISA Test Kit
16	T4 ELISA Test Kit
17	TSH ELISA Test Kit
18	Vitamin-D ELISA Test Kit
19	Vitamin-B12 ELISA Test Kit
20	Scrub Typhus IgM ELISA Test Kit
21	Typhoid IgG Antibody Elisa Test
22	Typhoid IgM Antibody Elisa Test
23	Alpha Feto Protein (AFP) Elisa Test Kit
24	Prostate Specific Antigen (PSA) ELISA Test Kit
25	Free (PSA) ELISA Test Kit
26	CA-125 ELISA Test Kit
27	CA19-9 ELISA Test Kit
28	CA15-3 ELISA Test Kit
29	Carcinoembryonic Antigen (CEA) ELISA Test Kit
30	Covid-19 Antigen ELISA Test Kit
31	Troponin I ELISA Test Kit
32	Myoglobin ELISA Test Kit

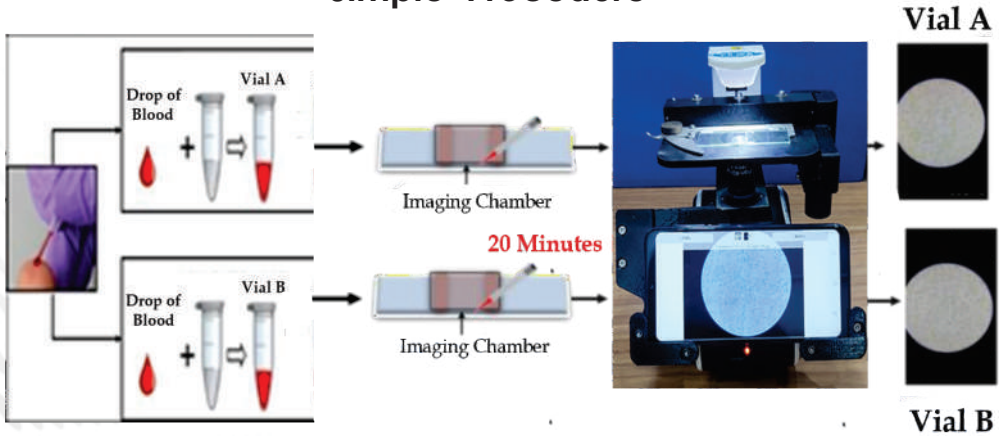
1st Time In INDIA in collaboration with IIT Bombay

AI -Shape Based Patented Point of care Sickle cell test^①

ShapeDx™

Gold Standard Microscopy AI based testing for detecting Sickle cell Disease – Trait- Normal in 20 minutes with 100% accuracy

Simple Procedure



Salient Features:

- Simple Procedure that gives Gold Standard result
- Fast report on field in 20 minutes as compared to HPLC (72 Hrs)
- Very Economical as compared to High Performance Liquid Chromatography.(HPLC)
- Test can be performed on field/ camps/Pathology Labs/Clinic & reports can be generated in 20 minutes

ShapeDx™

India's 1st Patented Gold Standard AI based Sickle cell detecting test with 100 % accuracy

①. Technology developed by Department of Biosciences and Bioengineering, IIT Bombay.
Granted Indian Patent No. 201621026630.

CERTIFICATIONS

BSCIC Certificate

MEDICAL DEVICE - QUALITY MANAGEMENT SYSTEM

This is to certify that **LORD'S MARK INDUSTRIES PVT. LTD.**, A-71, ROYAL INDUSTRIAL HUB, POMAN, KAMAN BIHAWADI ROAD, VASARI-401208, MAHARASHTRA, INDIA

has been independently assessed by BSCIC and is compliant with the requirement of **ISO 13485:2016**

For the following scope: Design, Manufacturing, Distribution and Supply of In-Vitro Diagnostic Reagents, Reagent Products, Calibrators and Control Material for Clinical Chemistry, Hematology (Rapid Test, ELISA), Immunology, Serology & Path, Manufacturing, Sales, Installation & Service of Bioreactors, Hematology, Urine, Urinalysis, Urine Chemistry, Calibrators and Control Material for Clinical Chemistry, A.I.A.S, Immunohistochemistry (IHC), A.I.A.S, Hematology (Hematology) (Immunohistochemistry), A.I.A.S, In Vitro Diagnostic Instruments and Software, A.I.A.S

Original Registration Issue Date: 05-Feb-2020 1st Surveillance Due on: 31-Jan-2022
 Issue Date: 05-Feb-2020 2nd Surveillance Due on: 31-Jan-2022
 Expiry Date: 31-Jan-2022

For BSCIC CERTIFICATIONS PVT. LTD. Managing Director

Page 1 of 1

DBS CERT CERTIFICATE

This is to certify that **LORD'S MARK INDUSTRIES LTD.**, HEAD OFFICE ADDRESS: 404, 4TH FLOOR, COSMOS MARY PARK, KOLBAD CROSS LANE, THANE, WEST-400601, MAHARASHTRA, INDIA. FACTORY: A-71, ROYAL INDUSTRIAL HUB, KAMAN BIHAWADI ROAD, POMAN VILLAGE, VASARI (EAST), PALGHAR-401208, MAHARASHTRA, INDIA

has been independently assessed by DBS and is compliant with the requirement of **ISO 45001:2018**

For the following scope of activities: DESIGN, MANUFACTURE, FORMULATION, ASSEMBLING AND MARKETING OF IN-VITRO DIAGNOSTIC KITS, REAGENTS AND INSTRUMENTS - ANALYSERS AND MICROBIOLOGY PRODUCTS.

Certificate Number: HS-20224082410

Date of Certification: 24th August 2024
 1st Surveillance Audit Due: 29th August 2025
 2nd Surveillance Audit Due: 29th August 2026
 Certificate Expiry: 29th August 2027

The certificate is subject to periodic surveillance audits by the certifying body on the basis of the following conditions:

Validity of this certificate may be checked at www.certification.com after working hour of time.

Head of Certification: [Signature]

DBS CERTIFICATIONS PVT. LTD. 142, 1st Floor, New Debraj, Packer House, Dalvi 1600, Jhadgaon, Mumbai-400002, India. www.dbscert.com

Obelis GROUP CERTIFICATE OF IVDR NOTIFICATION

Reference No: EP-0485-2023 Date Issued: 23/04/2023

This is to certify that, according to the Regulation (EU) 2017/745, we, here of Obelis s.p.a. performed all notification duties and responsibilities as the European Authorized Representative (EAR) of:

Name: Lord's Mark Industries Pvt Ltd Address: A-71, Royal Industrial Hub, Poman, Egmam Bihawadi Road, Vasari (East) Palghar Maharashtra 401208 India

AS ESTABLISHED AND DEMAND BY THE APPLICABLE REGULATION: The manufacturer declares that the Class (A) (IVDC) device(s) comply(ies) with the Regulation including of general safety and performance requirements. The manufacturer has provided Obelis s.p.a. (EC REP) with all the appropriate declarations as per the Regulation (EU) 2017/745 article 4 requirements, including the EC Declaration of Conformity (according to annex I) conforming that their Class (A) (IVDC) in vitro diagnostic medical device(s), as illustrated here below, fulfil the applicable requirements of the Regulation (EU) 2017/745. The validation of the following in vitro diagnostic medical device(s) has been completed by Obelis s.p.a. (EC REP) in accordance with the Regulation (EU) 2017/745 on the 23/04/2023.

CLASS OF IVD DEVICE: (Please See Annex A - 1) of Document (7) Pages: 17 (Device)

All of the following are provided that the manufacturer will continue complying with the hardware maintained equipment of the device:

- It is required to file the CE marking on (IVDC) (IVDC) (IVDC)
- Any place (device) (device) in the European Union and EEA territory.

Mr. S. Ekram CEO Obelis s.p.a.

Dr. Suresh Anandh Kumar Director in charge of the European Representative of Lord's Mark Industries Pvt Ltd.

QRO QUALITY RESEARCH ORGANIZATION Certificate of Compliance

This is to certify that **LORD'S MARK INDUSTRIES PRIVATE LIMITED**, HEAD OFFICE ADDRESS: 404, 4TH FLOOR, COSMOS MARY PARK, KOLBAD CROSS LANE, THANE, WEST-400601, MAHARASHTRA, INDIA. FACTORY: A-71, ROYAL INDUSTRIAL HUB, KAMAN BIHAWADI ROAD, POMAN VILLAGE, VASARI EAST, PALGHAR, 401208, MAHARASHTRA, INDIA

has been assessed and found working satisfactorily as per the norms of "Good Manufacturing Practice" as laid down by World Health Organization **Good Manufacturing Practice (GMP) System**

For the following scope of activities: DESIGN, DEVELOPMENT, MANUFACTURE AND SUPPLY OF IN-VITRO DIAGNOSTIC BIOCHEMISTRY, HEMATOLOGY (RAPID TEST) AND POCT - STRIPS, REAGENTS & KITS, RESALE, INSTALLATION AND SERVICING OF IN-VITRO DIAGNOSTIC ANALYZER, TRAINING & DISTRIBUTION OF IN-VITRO DIAGNOSTIC & MICROBIOLOGY PRODUCTS

Date of Certification: 21st November 2024 1st Surveillance Audit Due: 20th November 2025
 2nd Surveillance Audit Due: 20th November 2026
 Certificate Expiry: 20th November 2027

Certificate Number: 2024112119

Head of Certification: [Signature]

QRO QUALITY RESEARCH ORGANIZATION Certificate of Registration

This is to certify that **LORD'S MARK INDUSTRIES PRIVATE LIMITED**, HEAD OFFICE ADDRESS: 404, 4TH FLOOR, COSMOS MARY PARK, KOLBAD CROSS LANE, THANE, WEST-400601, MAHARASHTRA, INDIA. FACTORY: A-71, ROYAL INDUSTRIAL HUB, KAMAN BIHAWADI ROAD, POMAN VILLAGE, VASARI EAST, PALGHAR, 401208, MAHARASHTRA, INDIA

has been independently assessed by QRO and is compliant with the requirement of **ISO 9001:2015 Quality Management System**

For the following scope of activities: DESIGN, DEVELOPMENT, MANUFACTURE AND SUPPLY OF IN-VITRO DIAGNOSTIC BIOCHEMISTRY, HEMATOLOGY (RAPID TEST) AND POCT - STRIPS, REAGENTS & KITS, RESALE, INSTALLATION AND SERVICING OF IN-VITRO DIAGNOSTIC ANALYZER, TRAINING & DISTRIBUTION OF IN-VITRO DIAGNOSTIC & MICROBIOLOGY PRODUCTS

Date of Certification: 21st November 2024 1st Surveillance Audit Due: 20th November 2025
 2nd Surveillance Audit Due: 20th November 2026
 Certificate Expiry: 20th November 2027

Certificate Number: 305024112126Q

Head of Certification: [Signature]

Kcert Certification & Inspection Certificate of Compliance

Certificate Number: UK-2024090710

This is to certify that **LORD'S MARK INDUSTRIES LIMITED**, HEAD OFFICE ADDRESS: 404, 4TH FLOOR, COSMOS MARY PARK, KOLBAD CROSS LANE, THANE, WEST-400601, MAHARASHTRA, INDIA. FACTORY: A-71, ROYAL INDUSTRIAL HUB, KAMAN BIHAWADI ROAD, POMAN VILLAGE, VASARI EAST, PALGHAR, 401208, MAHARASHTRA, INDIA

Has successfully implemented the Quality Management System and been found working satisfactorily as per the norms of "Good Manufacturing Practice" as laid down by World Health Organization which has been in conformance to the requirements of **WHO-GMP**

DESIGN, MANUFACTURE, FORMULATION, ASSEMBLING AND MARKETING OF IN-VITRO DIAGNOSTIC KITS, REAGENTS, DNA KITS AND INSTRUMENTS - ANALYSERS

This certificate is based under the following conditions:

- It applies only to the quality system maintained in the manufacture of above referenced Medical Products.
- The certificate remains valid until the manufacturing conditions or the quality system are changed and is subject to continuous surveillance according to the WHO-GMP guidelines.
- The certificate validity is conditioned by positive results or surveillance audits.

Validity of this certificate can be verified at www.kcert.com after working hour of time.

Date of Certification: 7th February 2024
 1st Surveillance Audit Due: 6th February 2025
 2nd Surveillance Audit Due: 6th February 2026
 Certificate Expiry: 6th February 2027

Authorized Signatory: [Signature]

OUR EXHIBITIONS

RLTA - (RLTA), Mahabaleshwar (Jan, 2025)



Nepal Exhibition 2024



Meditech Con-3, Morbi Gujarat (Jan, 2025)



Thailand LAB International (Sep,2024)



DDA Meet 3.0, Nagpur (Feb, 2025)



PhilExpo (Aug, 2024)



Medical Fair Expo, Delhi (Mar, 2025)



PetFair SE ASIA Thailand (Oct,2024)



Medicall Expo, Hyderabad (Apr, 2025)



25th MEDEXPO AFRICA (Oct, 2024)



Our Achievements

December 2021	Lord's Mark Industries ventures into Medtech with Distribution Partnerships and introduces Health Kiosks to enhance public healthcare infrastructure.
August 2022	LordsMed collaborates with Sensing Self to introduce a Saliva-based Covid Test Kit in India.
September 2022	Lord's Mark Industries receives a direct insurance broking license from IRDAI.
October 2022	LordsMed inaugurates an advanced multidisciplinary 25,000 sq. ft IVD Manufacturing Facility in Vasai, near Mumbai.
January 2023	LordsMed establishes a distribution partnership with Hindustan Antibiotics Limited.
March 2023	Lord's Mark Industries is honored with BARC's "The Best Conglomerate for 2023" Award.
May 2023	Lord's Mark Industries partners with IIT-Bombay to advance sickle cell testing in India.
July 2023	LordsMed expands Global Footprint with Launch of Export Division for Diagnostic Supplies.
November 2023	LordsMed Pathology announces the launch of its First Pathology Centre in Maharashtra.
December 2023	Lord's Mark Industries aims for an IPO in 2024.
January 2024	<ul style="list-style-type: none"> • Lord's Mark Industries Ltd. expands its global presence and targets exports of more than 6.55 million Diagnostic Supplies to SAARC Countries. • Lord's Mark Industries illuminates Ayodhya with Smart Solar Street Lights.
February 2024	Lord's Mark Industries Ltd. files a Patent for its Bio-Chemistry Reagents Currently Manufacturing 45 + reagents in Biochemistry and Rapid.
March 2024	Lord's Mark Industries Ltd. has launched two new fully automated biochemistry analyzers .Names are LM 1015-200 benchtop model & LM 1016-400 floor model.
June 2025	Lord's Mark receives European CE Certification for its complete range of diagnostic instruments, marking a major milestone in global regulatory compliance.
July 2025	Lord's Mark achieves USFDA registration for its complete range of surgical products manufactured in-house, strengthening its global market presence.



Awards and Recognition

Lord's Mark Industries receives BARC's "The Best Conglomerate for 2023" Award.

5th Elets Pharma Leadership Summit & Awards.

THE CSR JOURNAL Excellence Awards 2023

Navbharat Awards Category - Innovation in Diagnostic Technology. 2025





Laboratory



Packing Area

Lord's Mark Industries Limited

Corporate Office:

201, 2nd Floor, Dosti Pinnacle,
Above New Passport Office,
Road No. 22, Wagle Estate,
Thane West - 400604

Registered Office:

B-101 Riddhi Siddhi Complex,
M.G. Road, Borivali (E),
Mumbai - 400 066

International Address:

Lords Mark Global LLC
79014TH ST N # 23833 ST.
PETERSBURG,, FL. US 33702

Factory Address(1):

Plot No A - 71, Royal Industrial
Hub, Poman Kaman, Bhiwandi
Road, Near Jain Temple, Taluka
Vasai, Dist. Palghar - 401208.

Factory Address(2):

Gala No. 6&7, Sheetal Shrushti
Industrial Estate, Bilalpada
Village, Vasai Taluka.

Factory Address(3):

A-45, Royal Industrial Hub
Poman Kaman Bhiwandi Road,
Vasai East 401208

Scan to Know more



www.lordsmark.com | www.lordsmed.com

cs.ivd@lordsmark.com / exportivd@lordsmark.com

Contact Number: +91 8451060080

